

THE HARD WORKING PUMP

The result of superior technology and expertise that has stood the test of time.



END SUCTION PULP, PAPER & PROCESS PUMPS **TEP - SERIES** **60 Hz**

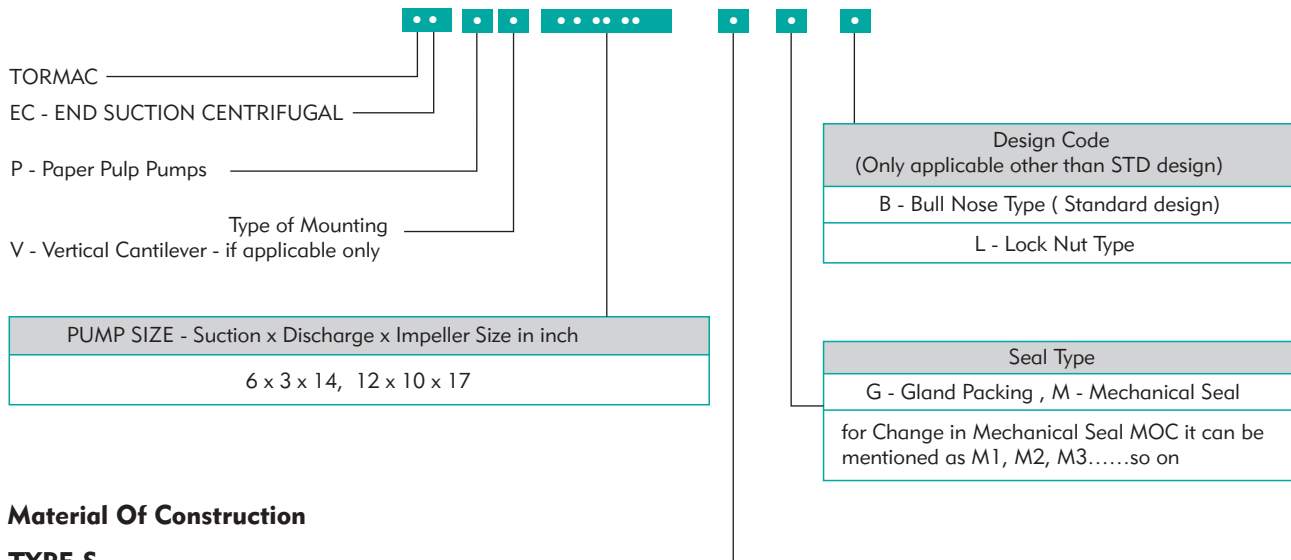
C O N T E N T S

END SUCTION PULP, PAPER & PROCESS PUMPS ECP SERIES (60Hz)

| | Page No. |
|---|----------|
| Model Identification Code & Materials of Construction | 4 |
| Description, Key Features & Applications | 5 |
| General Pump Selection, Operation Instructions & Technical Specifications | 6 |
| Exploded View | 7 |
| Cross Sectional Drawing | 8 |
| Performance Curves | 9 - 29 |
| Interchangeability Chart | 30 |
| Bare Shaft Pump - Mounting Dimensions | 31 |

GENERAL DATA

Model Identification Code



Material Of Construction

TYPE S

| PARTS NAME | MATERIAL (Code) | SAE/AISI | DIN | EUROPEAN |
|-------------------------|----------------------------|----------------------|----------------|---------------|
| Pump Casing | SS 304 (S) | ASTM A743 / A351 CF8 | 1.4308 | X5CrNi18-9 |
| Impeller | SS 304 (S) | ASTM A743 / A351 CF8 | 1.4308 | X5CrNi18-9 |
| Shaft | SS 304 (S) | ASTM A276 AISI 304 | 1.4308 | X5CrNi18-9 |
| Shaft Sleeve | SS 304 (S) | ASTM A276 AISI 304 | 1.4308 | X5CrNi18-9 |
| Side Plate (Wear Plate) | SS 304 (S) | ASTM A743 / A351 CF8 | 1.4308 | X5CrNi18-9 |
| Stuffing Box & Gland | SS 304 (S) | ASTM A743 / A351 CF8 | 1.4308 | X5CrNi18-9 |
| Bearing Housing | Cast Iron (C) | ASTM A48 class 30B | (0.6020) GG20 | EN-GJL-220 |
| Connecting Frame | Cast Iron - Frame 1 | ASTM A48 class 30B | (0.6020) GG20 | EN-GJL-220 |
| | Ductile Iron - Frame 2 & 3 | ASTM A536 60-40-18 | (0.7040) GGG40 | EN-GJL-400-15 |

TYPE N

| PARTS NAME | MATERIAL (Code) | SAE/AISI | DIN | EUROPEAN |
|-------------------------|----------------------------|-----------------------|----------------|---------------|
| Pump Casing | SS 316 (N) | ASTM A743 / A351 CF8M | 1.4408 | X6CrNiMo18-10 |
| Impeller | SS 316 (N) | ASTM A743 / A351 CF8M | 1.4408 | X6CrNiMo18-10 |
| Shaft | SS 316 (N) | ASTM A276 AISI 316 | 1.4401 | X5CrNiMo18-10 |
| Shaft Sleeve | SS 316 (N) | ASTM A276 AISI 316 | 1.4401 | X5CrNiMo18-10 |
| Side Plate (Wear Plate) | SS 316 (N) | ASTM A743 / A351 CF8M | 1.4408 | X6CrNiMo18-10 |
| Stuffing Box & Gland | SS 316 (N) | ASTM A743 / A351 CF8M | 1.4408 | X6CrNiMo18-10 |
| Bearing Housing | Cast Iron (C) | ASTM A48 class 30B | (0.6020) GG20 | EN-GJL-220 |
| Connecting Frame | Cast Iron - Frame 1 | ASTM A48 class 30B | (0.6020) GG20 | EN-GJL-220 |
| | Ductile Iron - Frame 2 & 3 | ASTM A536 60-40-18 | (0.7040) GGG40 | EN-GJL-400-15 |

Optional Material : WCB, Duplex, Super Duplex and other material are available on request.

END SUCTION PULP, PAPER & PROCESS PUMPS > TEP - SERIES

The TEP Series End Suction Pumps are robustly engineered to deliver high-efficiency, dependable performance in the most demanding industrial environments. Specifically designed for processing challenging fluids such as paper stock, pulp, and fibrous slurries, the TEP Series is an ideal solution for applications in the pulp & paper, sugar, food, and dairy industries.

Capable of handling slurries with consistencies up to 8%, these pumps excel in transferring thick, viscous, and solids-laden media. A key feature of the TEP Series is its adjustable impeller-to-wear plate clearance, which allows for precise performance tuning and significantly extends the service life of internal components. This adjustability is achieved through a simple shim system, enabling easy and accurate maintenance.

The pumps boast a modular design with interchangeable spare parts, simplifying servicing and minimizing downtime. This modularity contributes to reduced inventory costs and increased uptime for critical processes.

Offered in a variety of materials, and with gland packing and mechanical seal configurations, the TEP Series can be tailored to meet the specific operational requirements of a wide range of industries.

Key Features

Back Pull-out Design

High Efficiency

Non-Clog Semi open impeller with bull nose ensures that smooth entry of liquid with fibrous Solids.

Handle consistencies upto 8%

External Impeller adjustments to maintain optimum hydraulic performance



Applications

Paper Industry : Pulp, Paper and stock, de-inking process, bleaching, contaminated process liquids, pulp slurry, waste liquids, white water circulation, cooling water circulation, condensate pumping, chemical injection

Sugar Industry : Strained and unstrained juice transfer, bagasse and molasses transfer, contaminated process liquids, waste liquids, wastewater and sludge transfer, water circulation, process water, evaporation process.

Food Industry : Food Pulp, Sauces, juice and beverage transfer, sugar syrup, glucose and other sweetener liquid transfer, canning and bottling process, cooling water circulation

Brewery and Distillery Industry : Fermented liquid transfer, Alcohol and Distilled liquid transfer, waste liquid transfer, water circulation, canning and bottling process, cooling water circulation

Dairy Industry : milk and cream transfer, additive transfer, whey transfer, cooling water circulation.

Edible oil Industry : Solvent and oil transfer, acid and additive transfer, loading and unloading of oils, Canning and bottling process, cooling water circulation, hot liquid transfer, waste oil transfer

Technical data

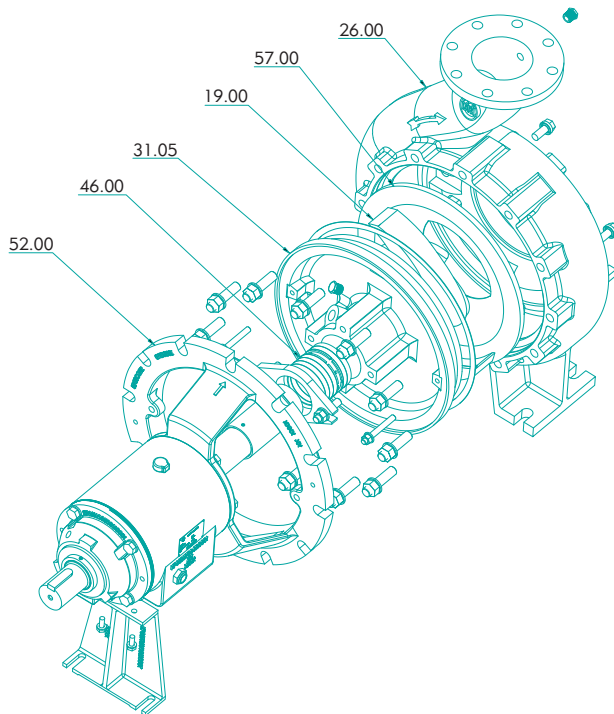
| | |
|----------------------------|----------------------------|
| Head Range | 32 - 310ft |
| Flow Range | 65 - 11800gpm |
| Speed | 860 / 1150 / 1750 rpm |
| Impeller Type | Semi Open Impeller |
| Outlet Size | 3" - 14" |
| Power Range | 10 - 420HP |
| Maximum Liquid Temperature | 14°F - 194°F |
| Shaft Seal | Standard : Gland Packing |
| | Optional : Mechanical Seal |
| Bearing Lubrication | Oil |
| Flange Standard | ASME 16.5 Class 150 |
| Maximum working Pressure | 12 - 16 bar |

General Pump Selection & Operation Instructions

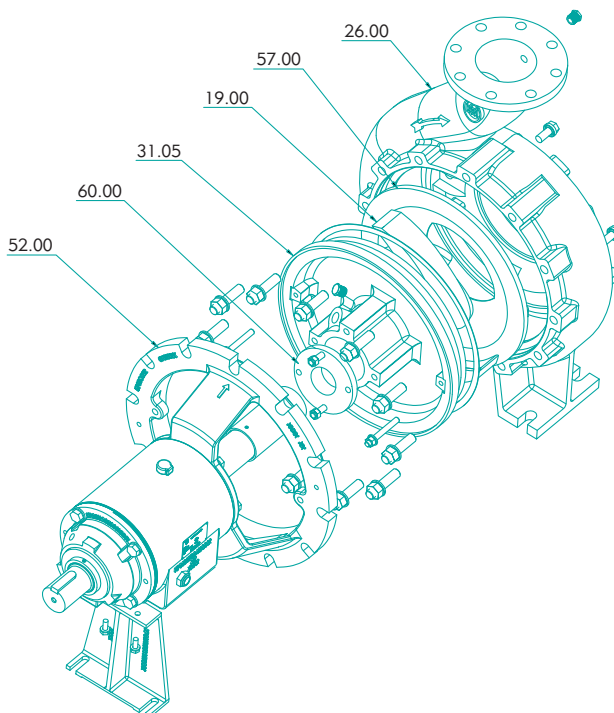
1. All performance curves are based on water (specific gravity = 1.0; low viscosity). Corrections must be applied for fluids with different properties.
2. Select a motor or engine with sufficient power margin above the pump duty point. This prevents overloading under normal and transient operating conditions.
3. Always calculate NPSHA (Net Positive Suction Head Available) carefully, especially when pumping hot or cold liquids with negative or positive suction. Account for vapor pressure effects.
4. Ensure $NPSHA \geq NPSHR + 0.5m$ to avoid cavitation during both negative and positive suction conditions.
5. For high-viscosity fluids, apply viscosity correction factors to head, flow and efficiency.
6. Choose pumps to operate within 70% to 120% of the Best Efficiency Point (BEP) against flow. Operating within this range ensures better efficiency, reliability, and reduced wear.
7. Select pump materials based on fluid properties:
 - i. Chemical compatibility
 - ii. Operating temperature
 - iii. Abrasiveness or corrosiveness
8. Use suction and discharge piping at least one nominal size larger than the pump nozzle to reduce friction losses and turbulence.
9. Delivery Side:
 - i. Install a Non-Return Valve (NRV) to prevent backflow.
 - ii. Install a gate or globe valve to control flow during start-up/shutdown.
10. Start-Up and Shut-Down Procedure:
 - i. Keep the delivery valve closed when starting or stopping the pump.
 - ii. For mixed flow pumps and pumps with a rising power curve toward shut-off, the pump must be started and stopped with the delivery valve in the open position, or as per the manufacturer's specific recommendations.
11. All pump performance curve tolerances conform to HI : 14.6 / ISO : 9906 Grade 2B standards.

EXPLODED VIEW

Gland Packing Construction



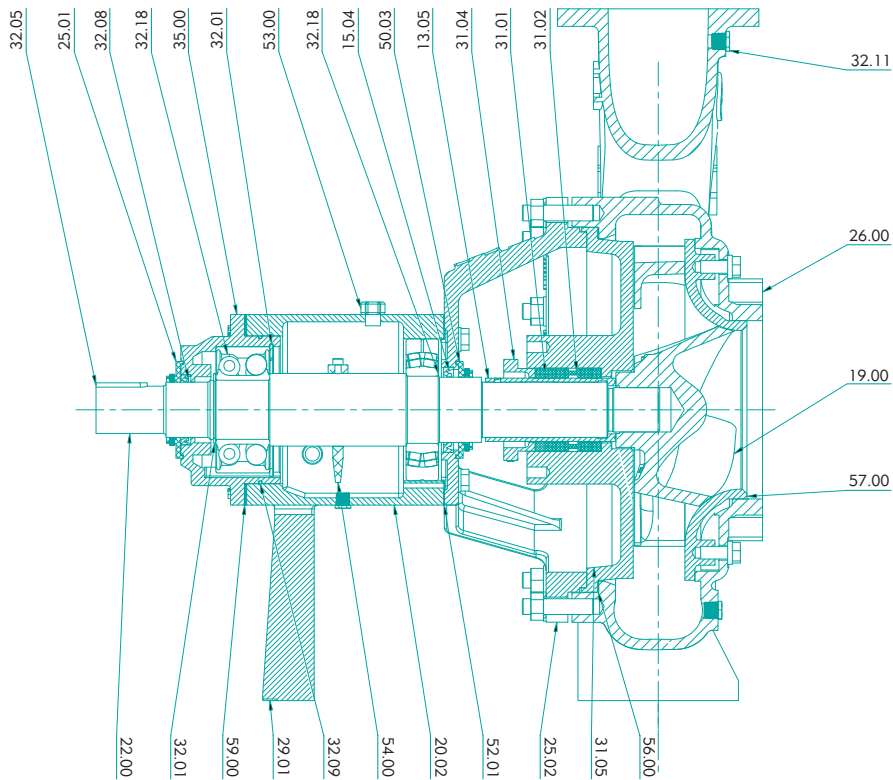
Mechanical Seal Construction



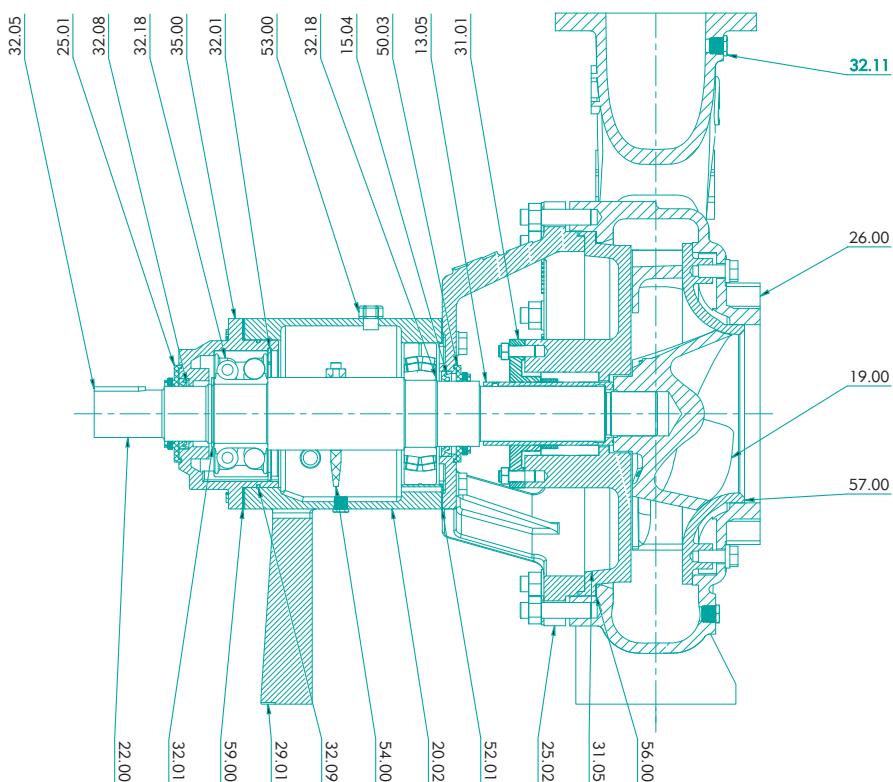
| P. No. | Part Name |
|--------|------------------|
| 52.00 | Connecting Frame |
| 60.00 | Mechanical Seal |
| 31.05 | Stuffing Box |
| 19.00 | Impeller |
| 57.00 | Side Plate |
| 26.00 | Casing |
| 46.00 | Gland Packing |

CROSS SECTIONAL DRAWING

Gland Packing Construction



Mechanical Seal Construction



| P. No. | Part Name |
|--------|---|
| 26.00 | Casing |
| 22.00 | Shaft |
| 19.00 | Impeller |
| 13.05 | Sleeve Shaft |
| 31.05 | Stuffing Box |
| 32.05 | Parallel Key |
| 32.18 | Double Row Angular Contact Ball Bearing |
| 32.01 | Circlip External |
| 35.00 | Housing Bearing |
| 32.01 | Circlip Internal |
| 32.09 | 'O' Ring |
| 20.02 | Bearing Frame |
| 32.18 | Spherical Roller Bearing |
| 52.01 | Gasket Connecting Frame |
| 25.02 | Connecting Frame |
| 53.00 | Breather Nut |
| 25.01 | Deflector |
| 32.08 | Oil Seal |
| 54.00 | Thrower |
| 31.01 | Gland Packing / Mechanical Seal |
| 31.02 | Ring Lantern |
| 31.04 | Gland |
| 56.00 | Gasket Casing |
| 57.00 | Side Plate |
| 29.01 | Frame Support |
| 59.00 | Shim |
| 32.11 | Hex. Plug |

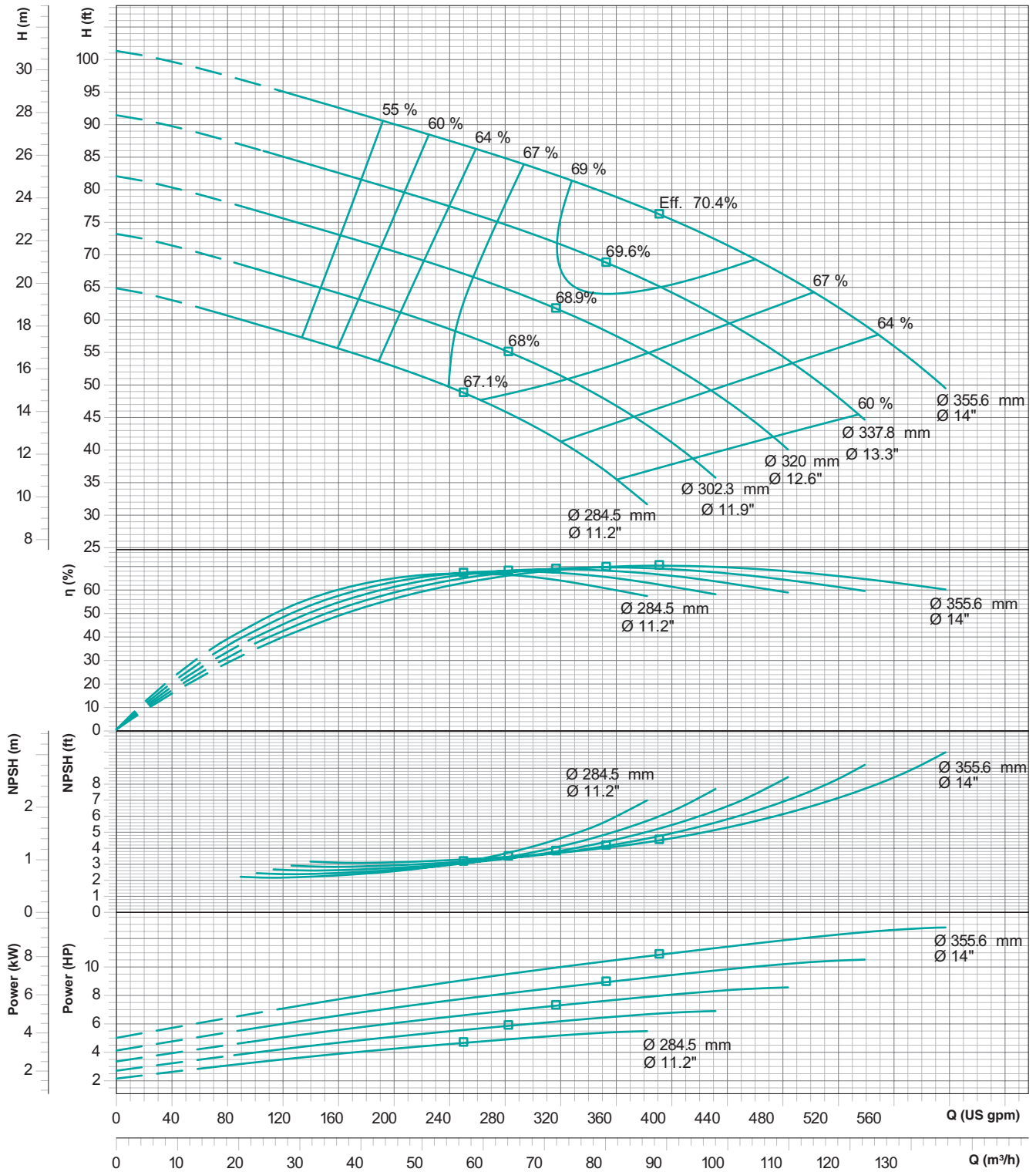
PERFORMANCE CURVES

Model : **TEP - 6 x 3 x 14**

Speed : **1150 rpm**

Suc x Del (in Inches) : **6 x 3**

Max. Impeller Ø : **355.6mm**



Performance curve tolerances are as per HI : 14.6 / ISO: 9906, Grade 2B

Note : Performance curve are as per specific gravity and viscosity of water.

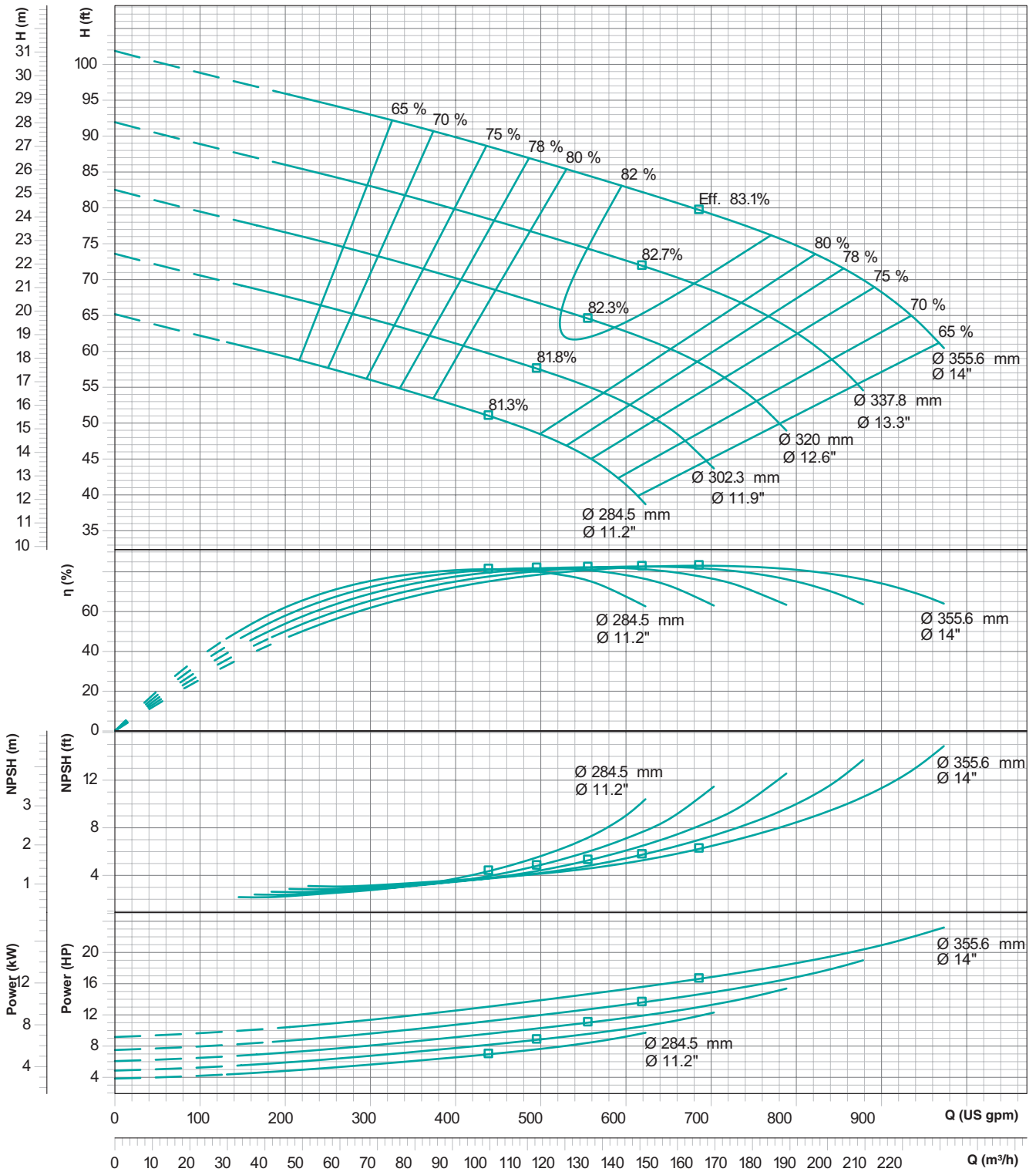
PERFORMANCE CURVES

Model : **TEP - 6 x 4 x 14**

Speed : **1150 rpm**

Suc x Del (in Inches) : **6 x 4**

Max. Impeller Ø : **355.6mm**



Performance curve tolerances are as per HI : 14.6 / ISO: 9906, Grade 2B

Note : Performance curve are as per specific gravity and viscosity of water.

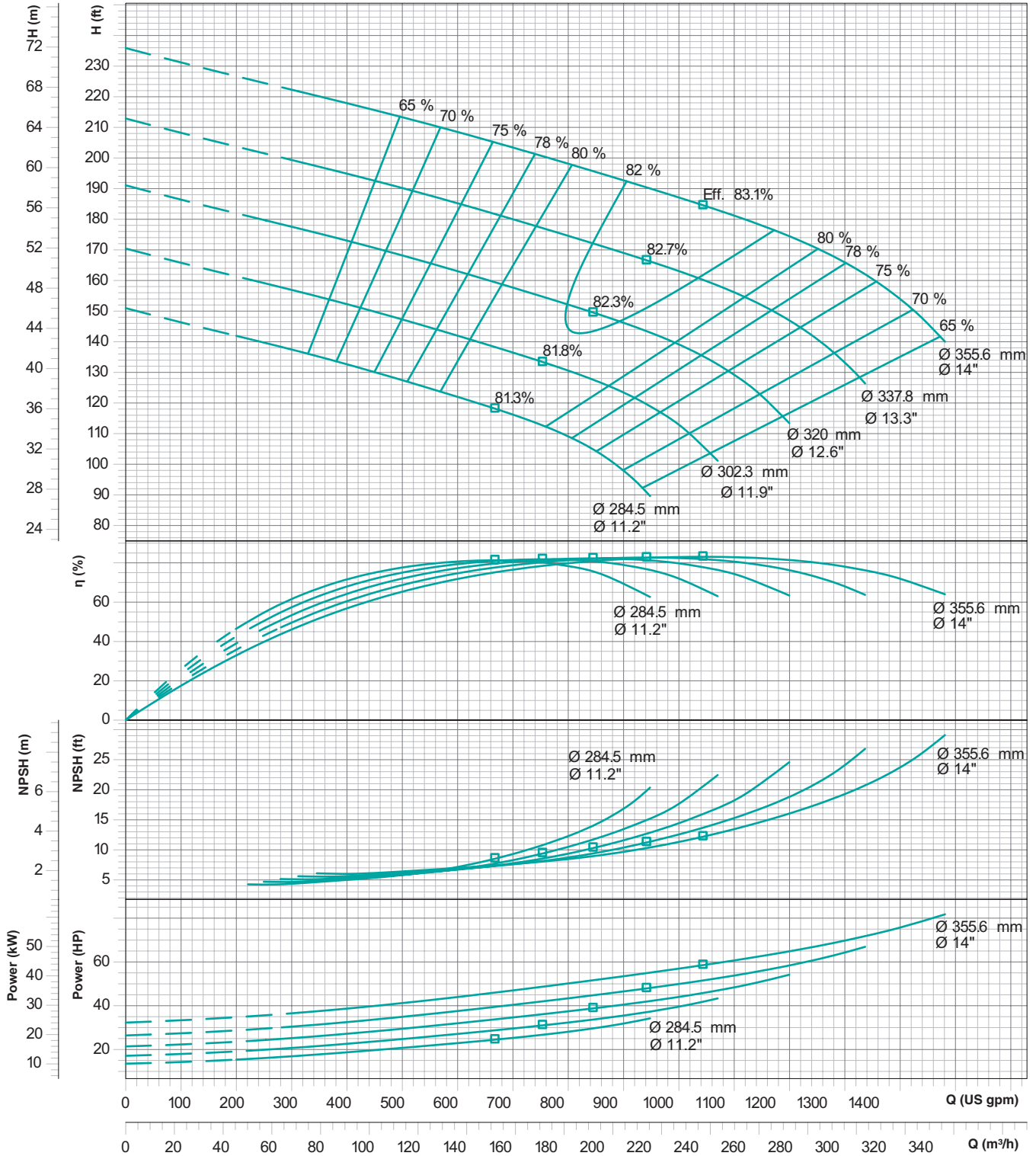
PERFORMANCE CURVES

Model : **TEP - 6 x 4 x 14**

Speed : **1750 rpm**

Suc x Del (in Inches) : **6 x 4**

Max. Impeller Ø : **355.6mm**



Performance curve tolerances are as per HI : 14.6 / ISO: 9906, Grade 2B

Note : Performance curve are as per specific gravity and viscosity of water.

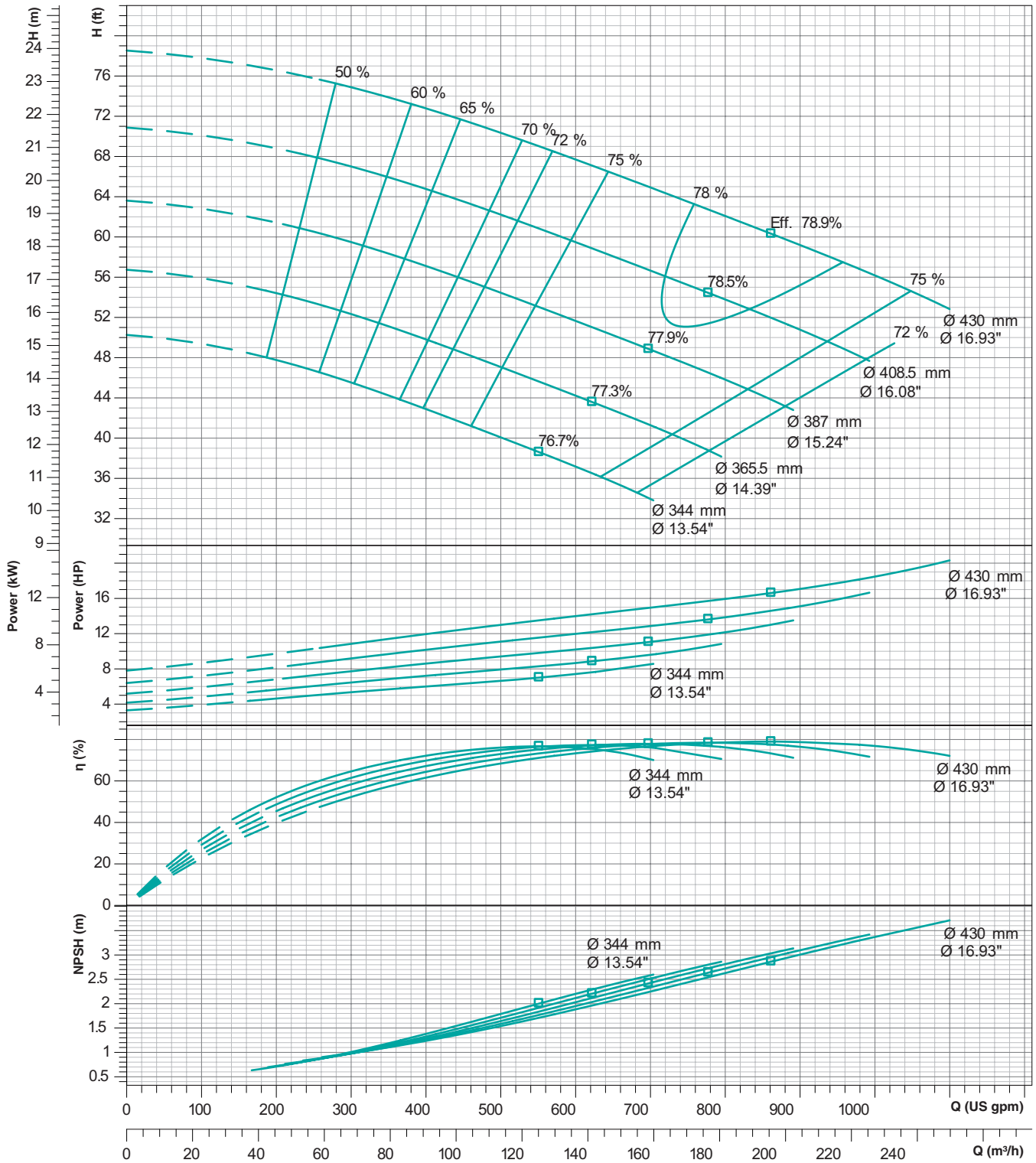
PERFORMANCE CURVES

Model : **TEP - 8 x 4 x 17**

Speed : **860 rpm**

Suc x Del (in Inches) : **8 x 4**

Max. Impeller Ø : **430mm**



Performance curve tolerances are as per HI : 14.6 / ISO: 9906, Grade 2B

Note : Performance curve are as per specific gravity and viscosity of water.

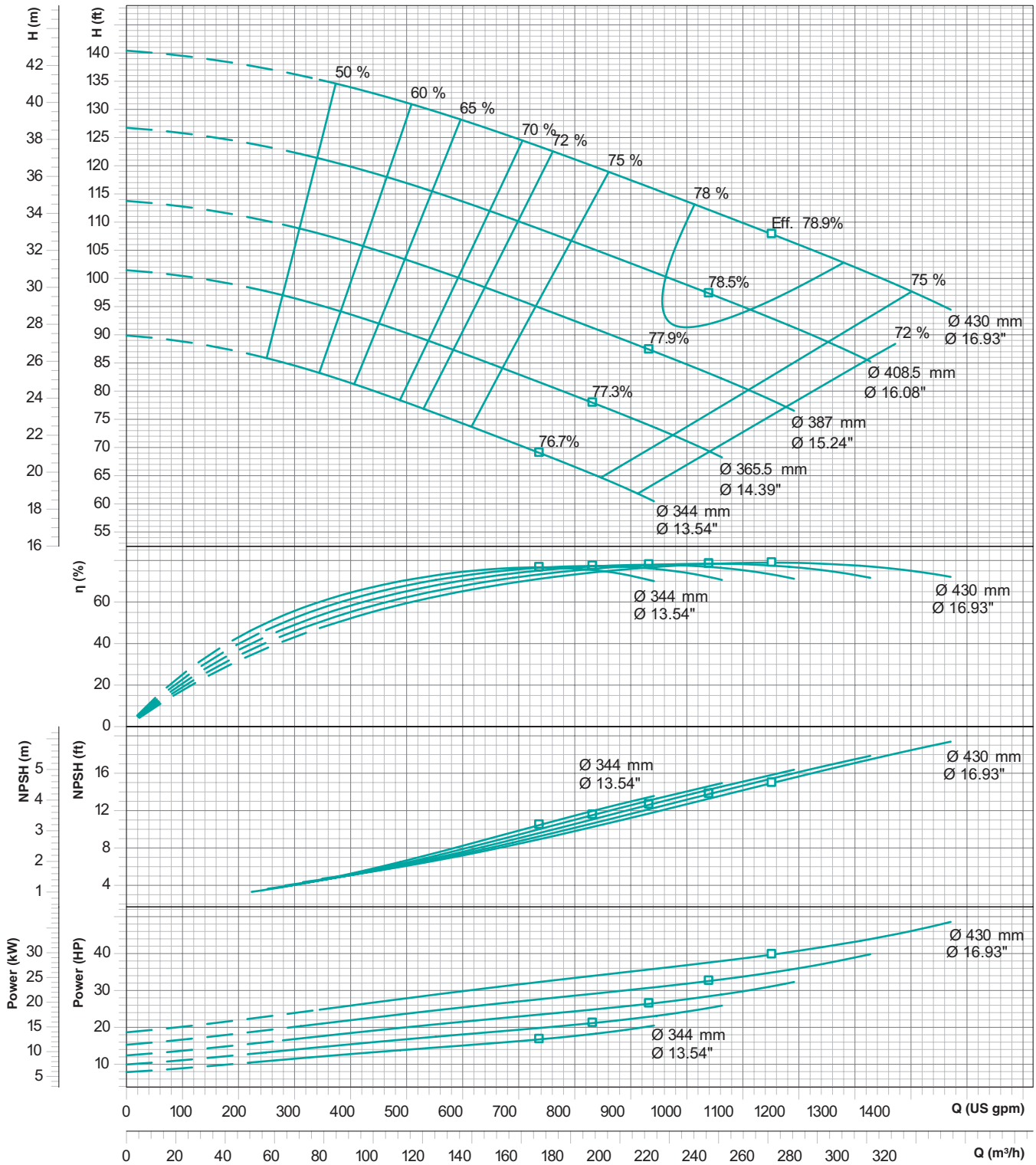
PERFORMANCE CURVES

Model : **TEP - 8 x 4 x 17**

Speed : **1150 rpm**

Suc x Del (in Inches) : **8 x 4**

Max. Impeller Ø : **430mm**



Performance curve tolerances are as per HI : 14.6 / ISO: 9906, Grade 2B

Note : Performance curve are as per specific gravity and viscosity of water.

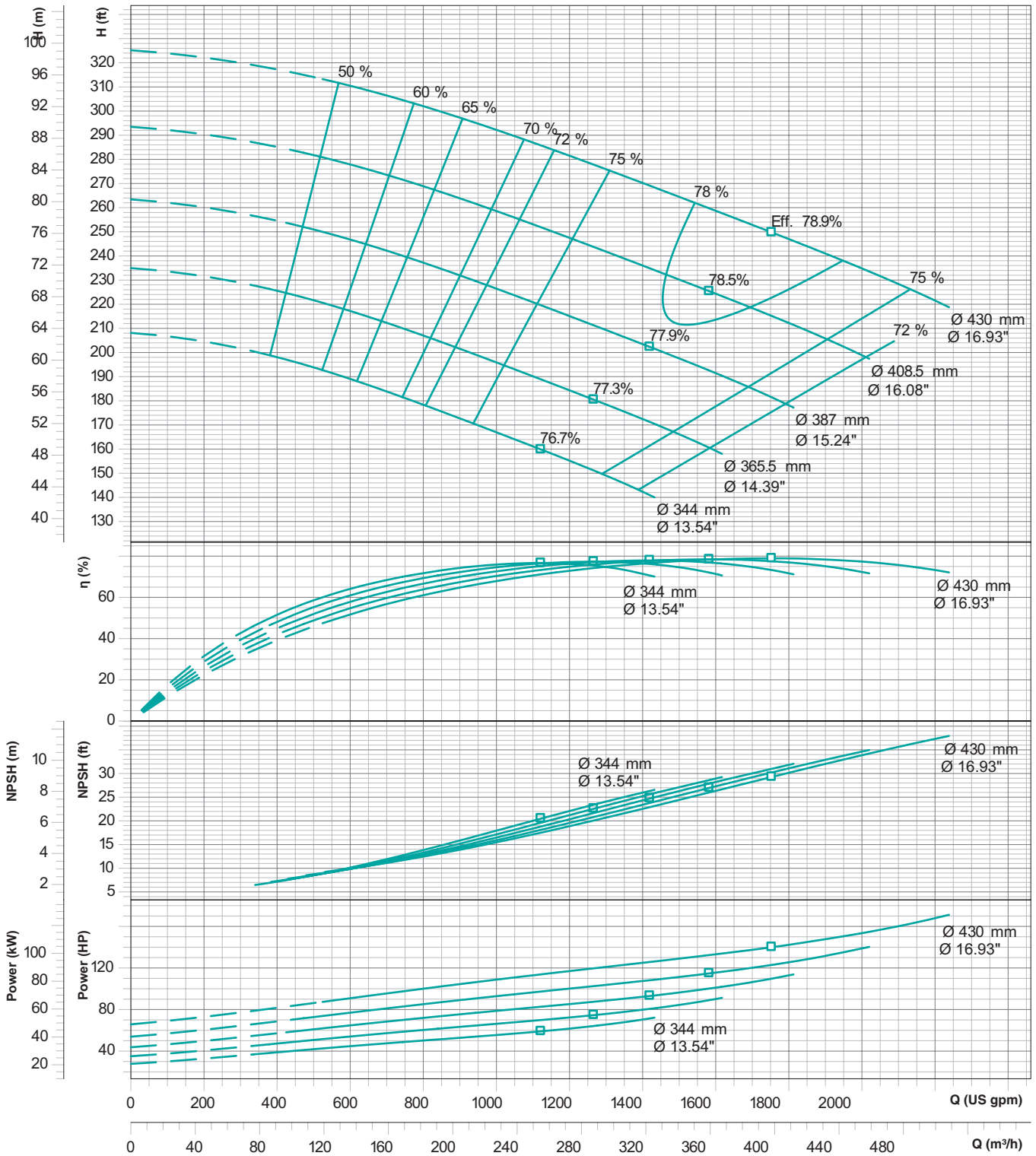
PERFORMANCE CURVES

Model : **TEP - 8 x 4 x 17**

Speed : **1750 rpm**

Suc x Del (in Inches) : **8 x 4**

Max. Impeller Ø : **430mm**



Performance curve tolerances are as per HI : 14.6 / ISO: 9906, Grade 2B

Note : Performance curve are as per specific gravity and viscosity of water.

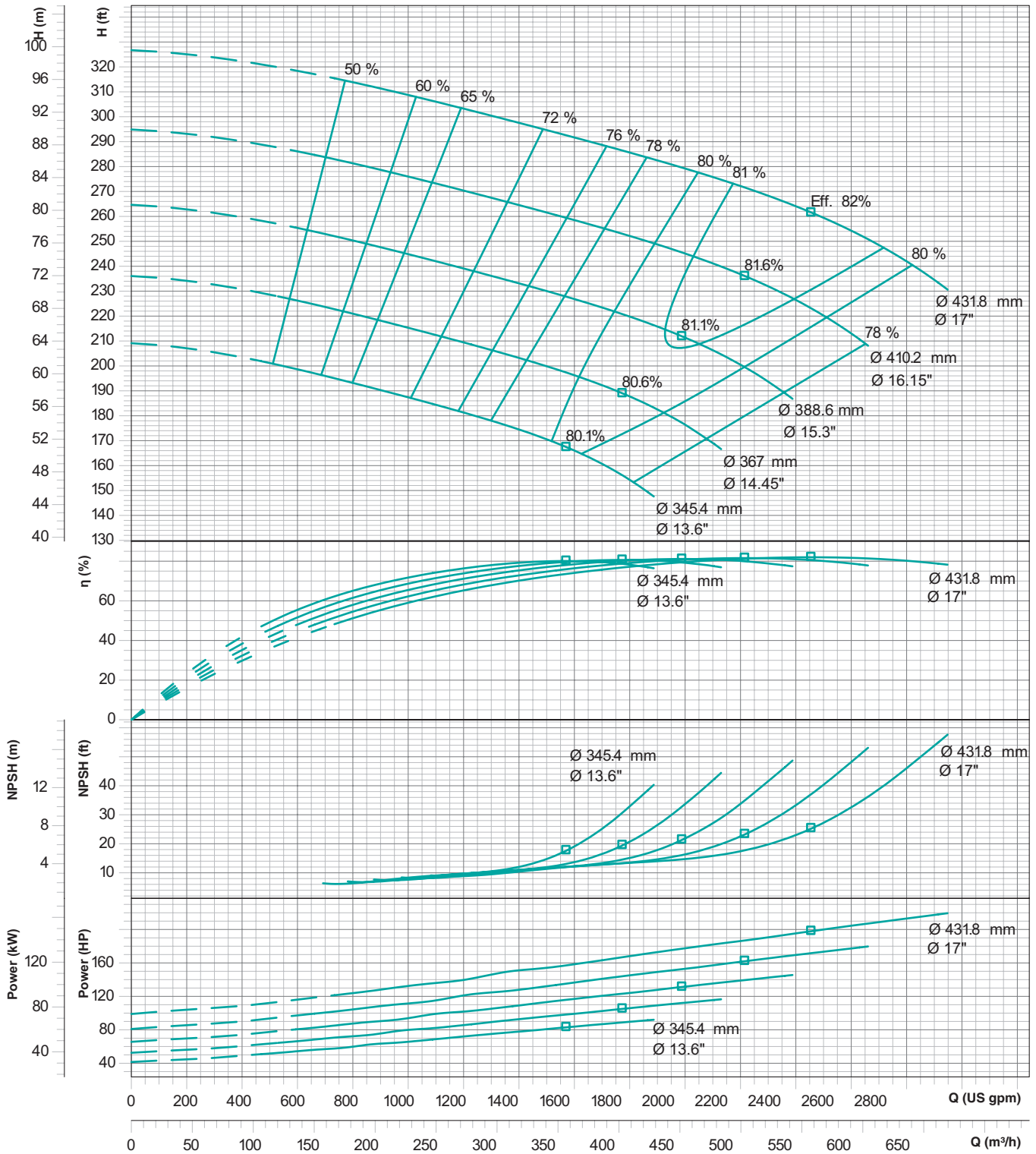
PERFORMANCE CURVES

Model : **TEP - 8 x 5 x 17**

Speed : **1750 rpm**

Suc x Del (in Inches) : **8 x 5**

Max. Impeller Ø : **431.8mm**



Performance curve tolerances are as per HI : 14.6 / ISO: 9906, Grade 2B

Note : Performance curve are as per specific gravity and viscosity of water.

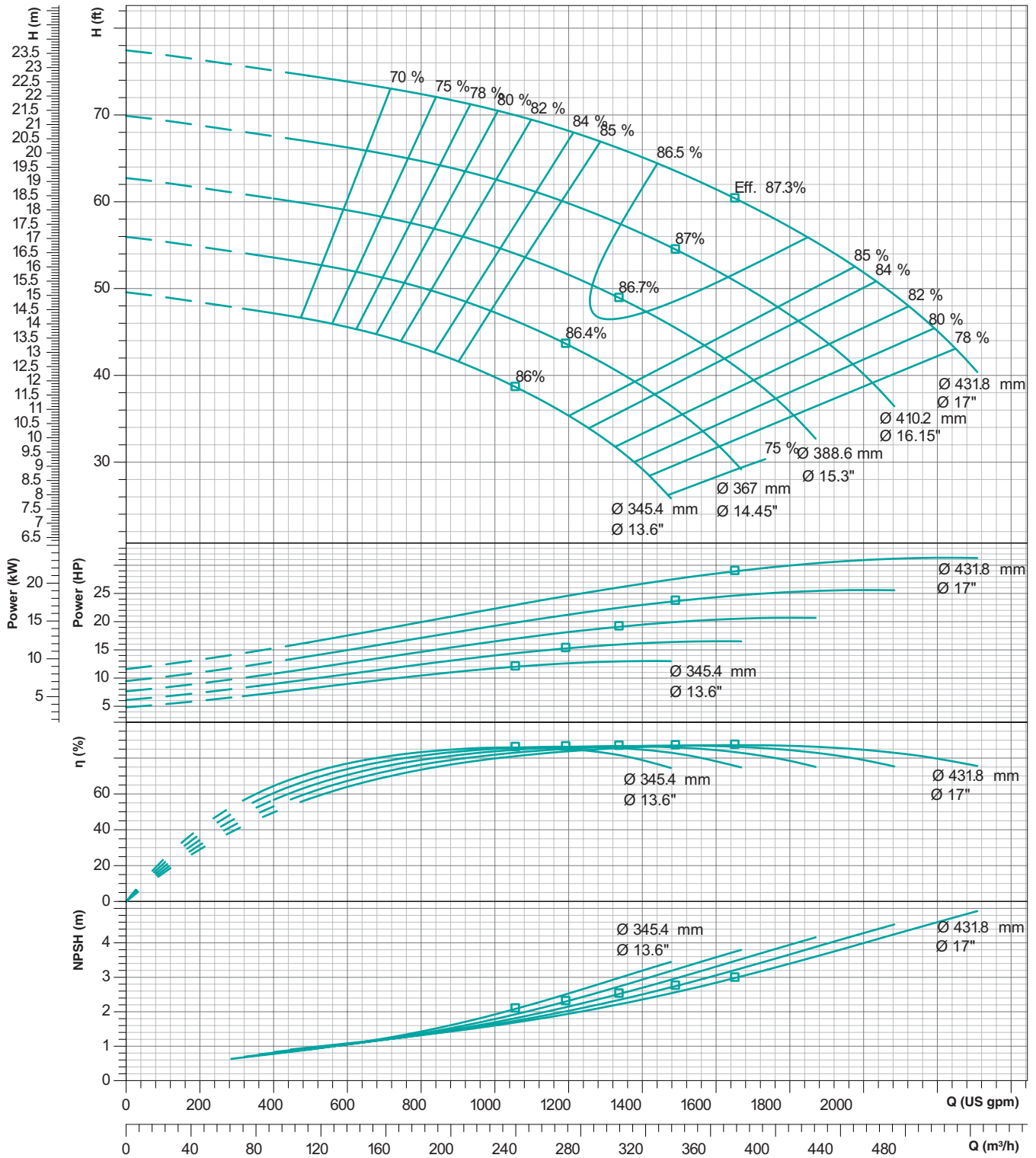
PERFORMANCE CURVES

Model : **TEP - 8 x 6 x 17**

Speed : **860 rpm**

Suc x Del (in Inches) : **8 x 6**

Max. Impeller Ø : **431.8mm**



Performance curve tolerances are as per HI : 14.6 / ISO: 9906, Grade 2B

Note : Performance curve are as per specific gravity and viscosity of water.

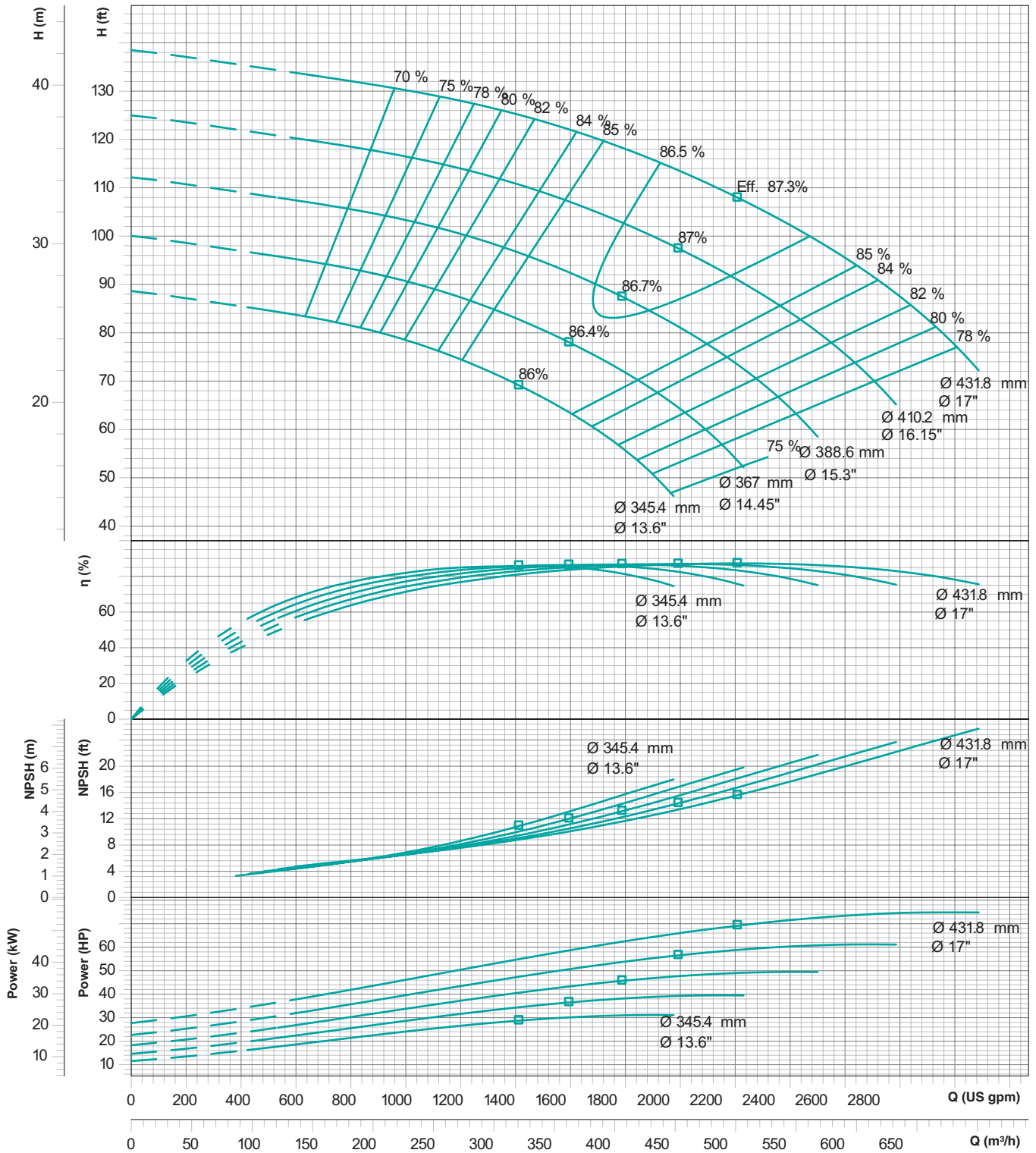
PERFORMANCE CURVES

Model : **TEP - 8 x 6 x 17**

Speed : **1150 rpm**

Suc x Del (in Inches) : **8 x 6**

Max. Impeller Ø : **431.8mm**



Performance curve tolerances are as per HI : 14.6 / ISO: 9906, Grade 2B

Note : Performance curve are as per specific gravity and viscosity of water.

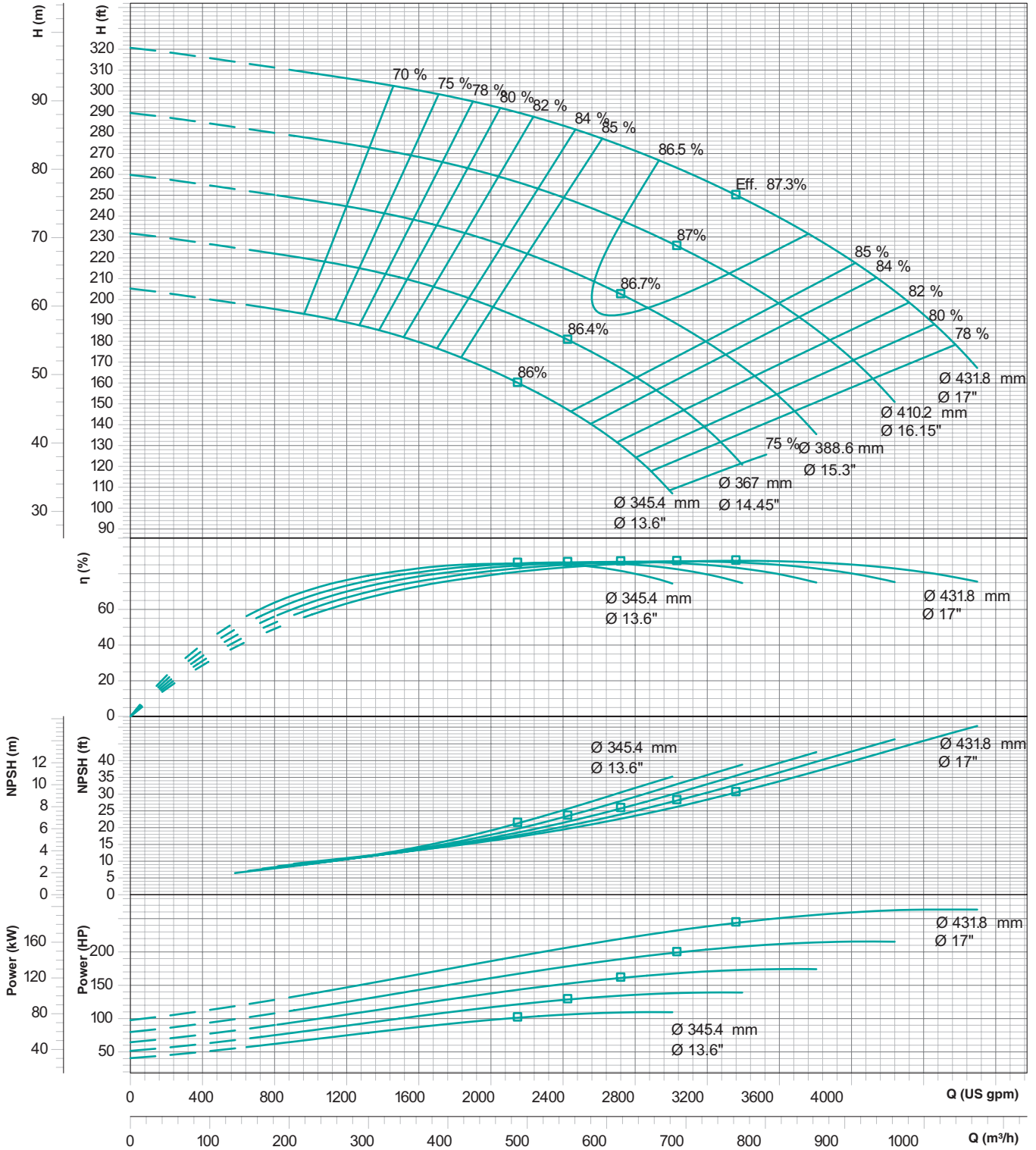
PERFORMANCE CURVES

Model : **TEP - 8 x 6 x 17**

Speed : **1750 rpm**

Suc x Del (in Inches) : **8 x 6**

Max. Impeller Ø : **431.8mm**



Performance curve tolerances are as per HI : 14.6 / ISO: 9906, Grade 2B

Note : Performance curve are as per specific gravity and viscosity of water.

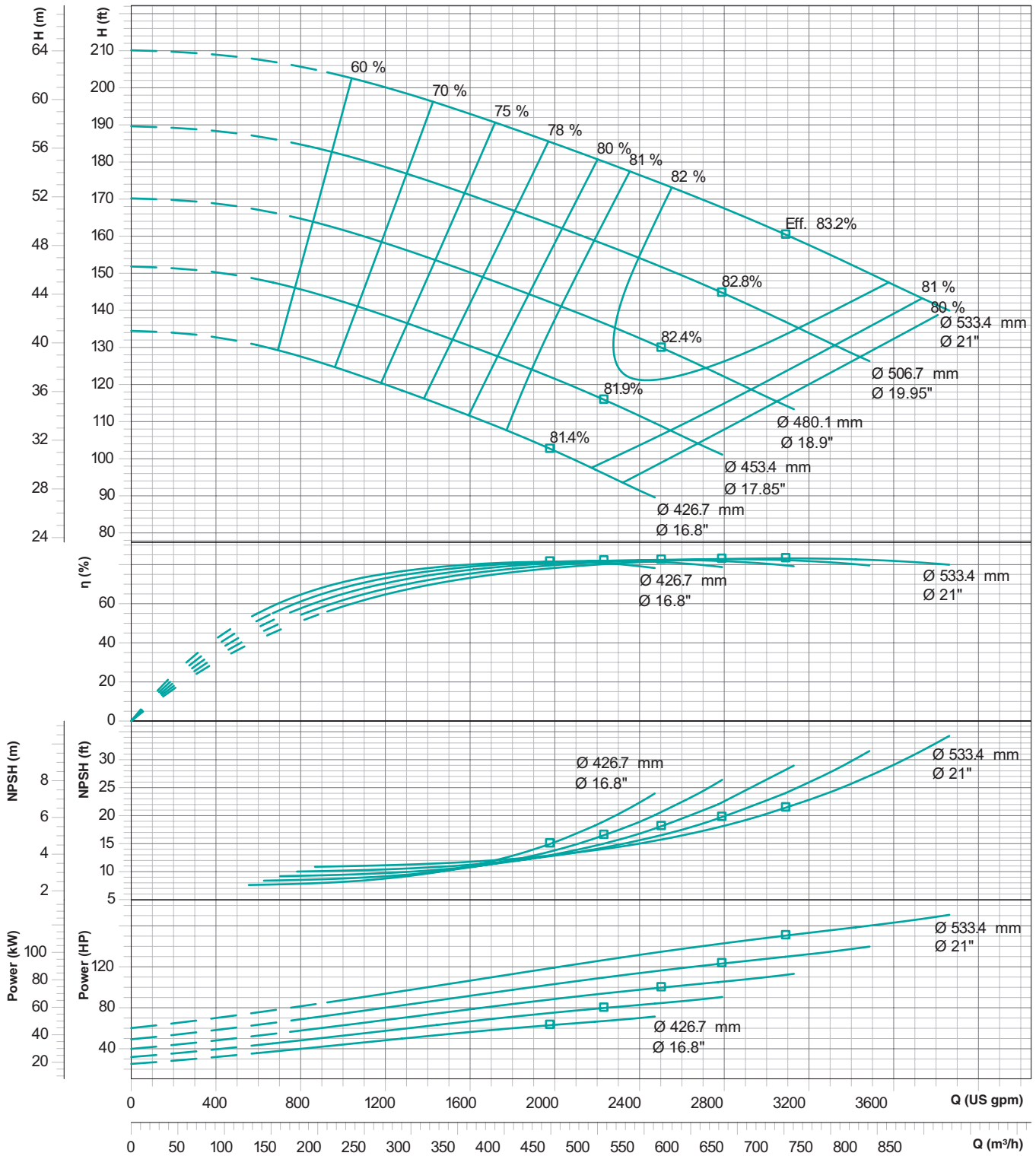
PERFORMANCE CURVES

Model : **TEP - 8 x 6 x 21**

Speed : **1150 rpm**

Suc x Del (in Inches) : **8 x 6**

Max. Impeller Ø : **533.4mm**



Performance curve tolerances are as per HI : 14.6 / ISO: 9906, Grade 2B

Note : Performance curve are as per specific gravity and viscosity of water.

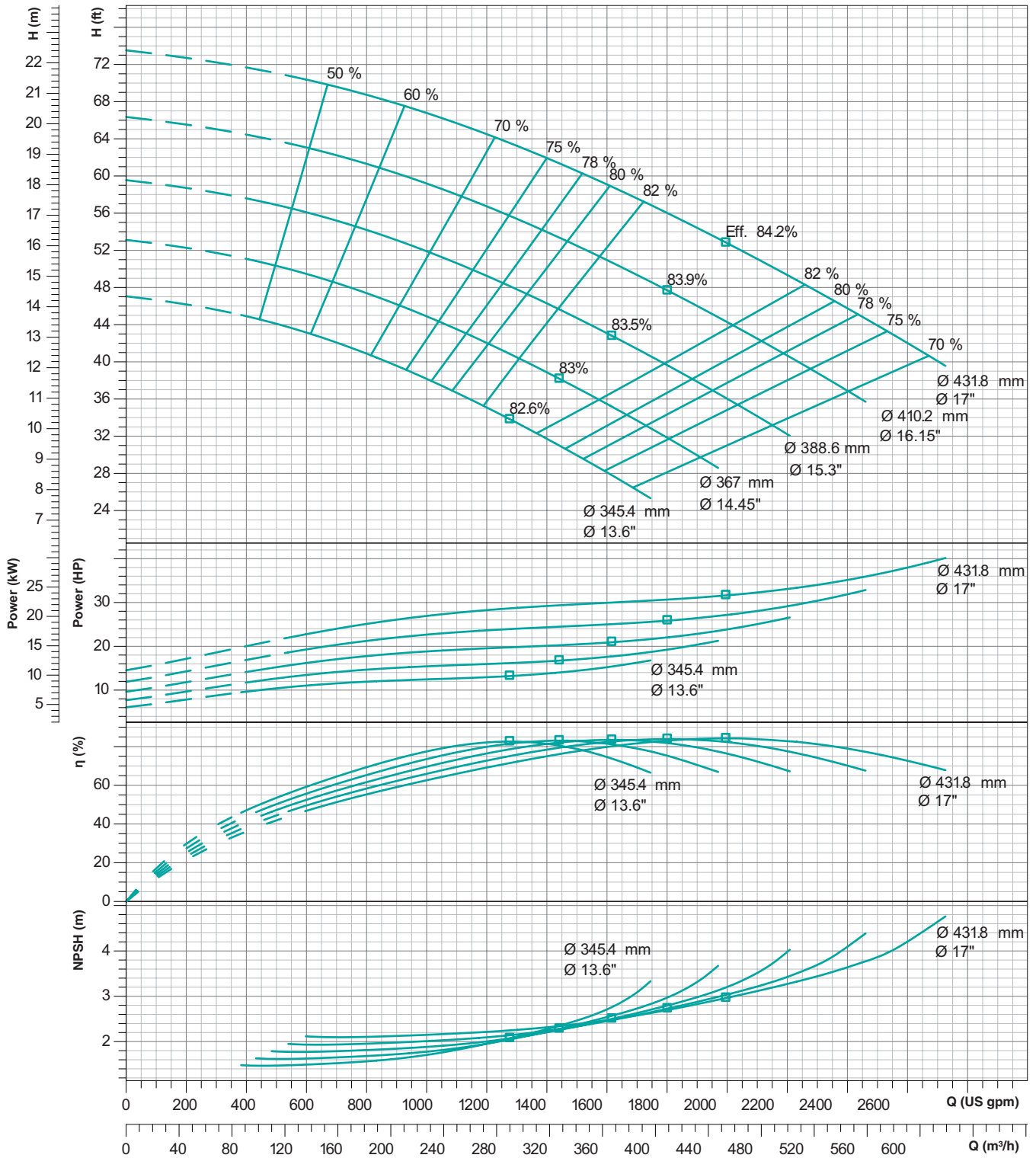
PERFORMANCE CURVES

Model : **TEP - 10 x 8 x 17**

Speed : **860 rpm**

Suc x Del (in Inches) : **10 x 8**

Max. Impeller Ø : **431.8mm**



Performance curve tolerances are as per HI : 14.6 / ISO: 9906, Grade 2B

Note : Performance curve are as per specific gravity and viscosity of water.

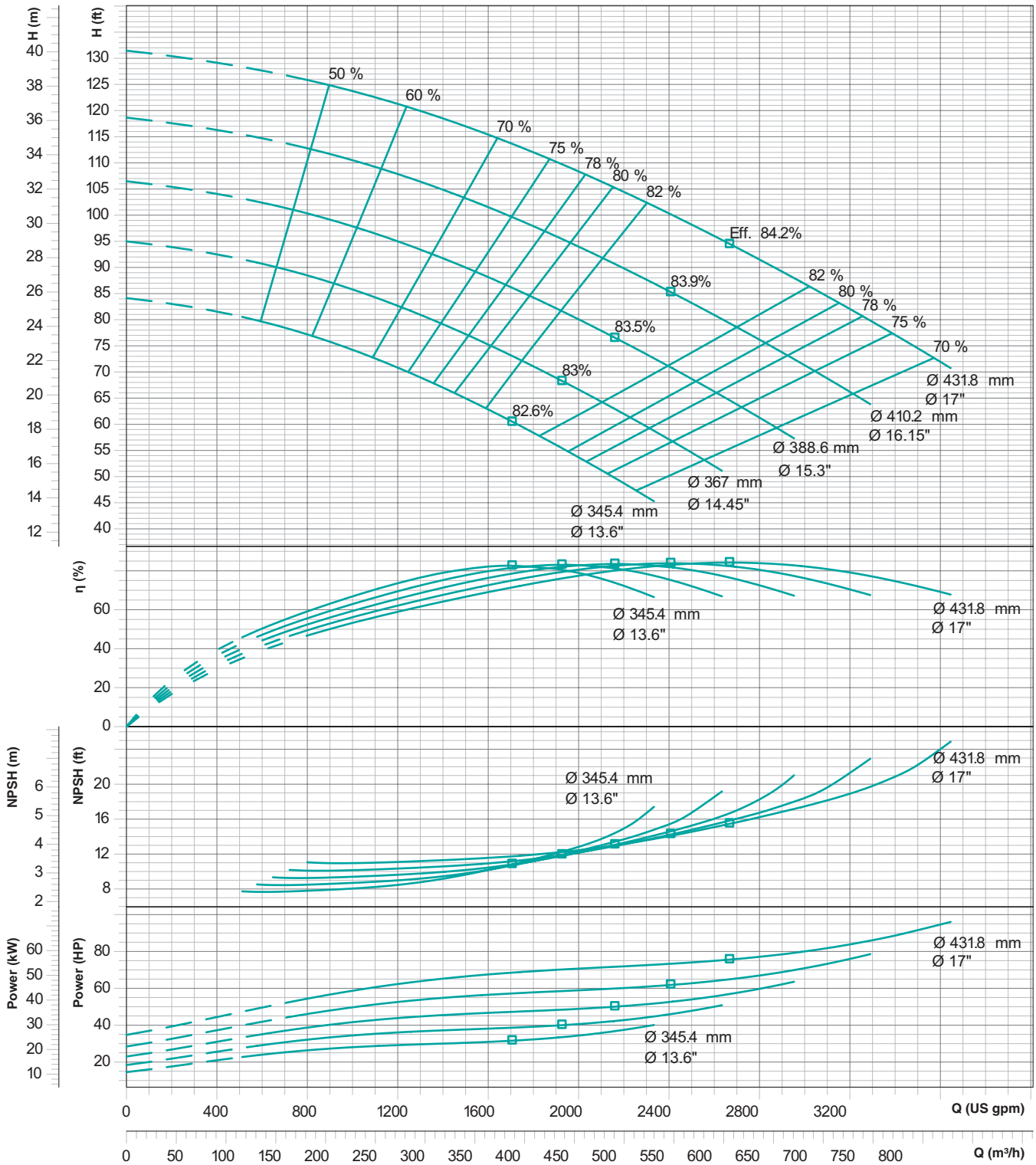
PERFORMANCE CURVES

Model : **TEP - 10 x 8 x 17**

Speed : **1150 rpm**

Suc x Del (in Inches) : **10 x 8**

Max. Impeller Ø : **431.8mm**



Performance curve tolerances are as per HI : 14.6 / ISO: 9906, Grade 2B

Note : Performance curve are as per specific gravity and viscosity of water.

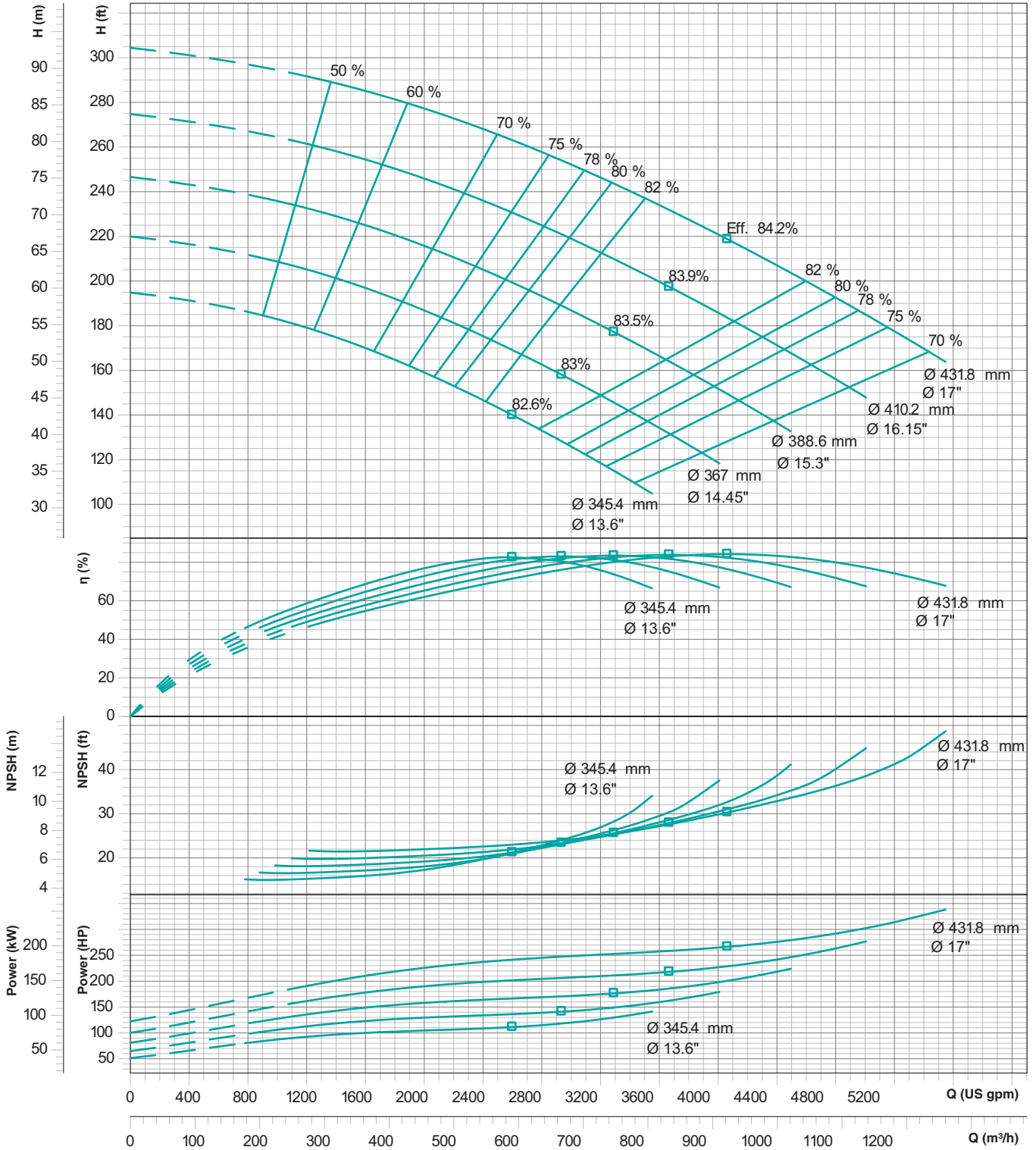
PERFORMANCE CURVES

Model : **TEP - 10 x 8 x 17**

Speed : **1750 rpm**

Suc x Del (in Inches) : **10 x 8**

Max. Impeller Ø : **431.8mm**



Performance curve tolerances are as per HI : 14.6 / ISO: 9906, Grade 2B

Note : Performance curve are as per specific gravity and viscosity of water.

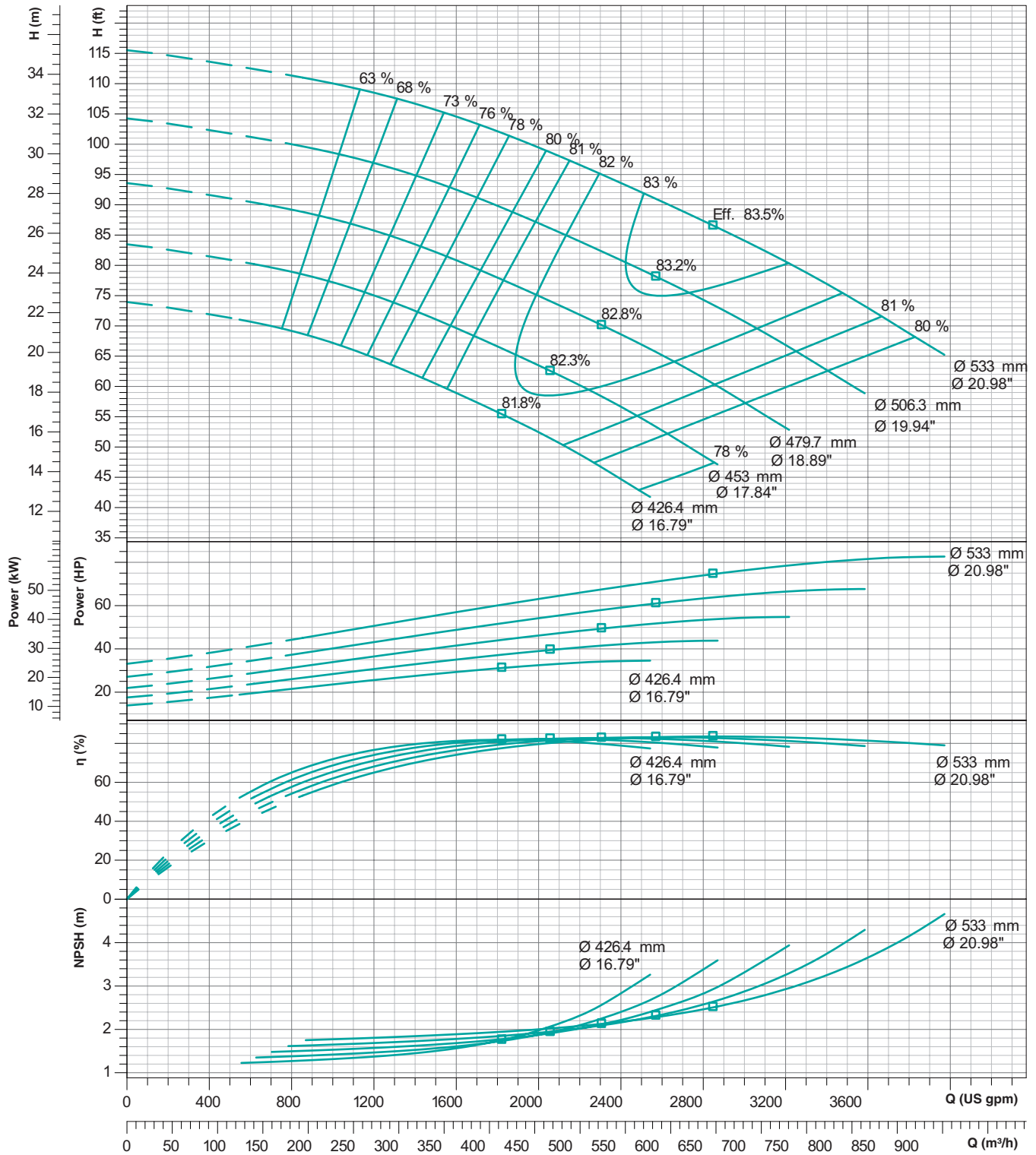
PERFORMANCE CURVES

Model : **TEP - 10 x 8 x 21**

Speed : **860 rpm**

Suc x Del (in Inches) : **10 x 8**

Max. Impeller Ø : **533mm**



Performance curve tolerances are as per HI : 14.6 / ISO: 9906, Grade 2B

Note : Performance curve are as per specific gravity and viscosity of water.

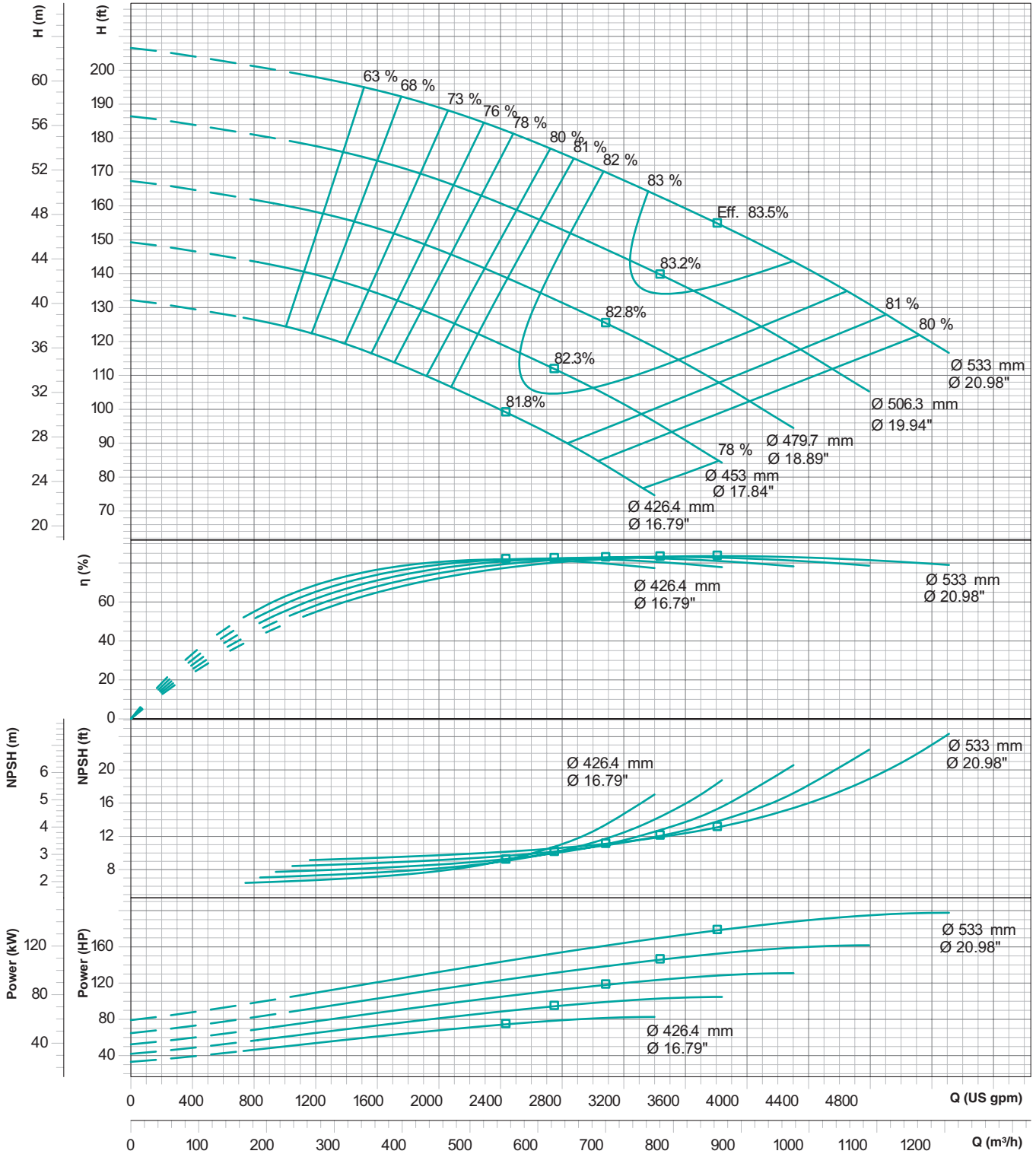
PERFORMANCE CURVES

Model : **TEP - 10 x 8 x 21**

Speed : **1150 rpm**

Suc x Del (in Inches) : **10 x 8**

Max. Impeller Ø : **533mm**



Performance curve tolerances are as per HI : 14.6 / ISO: 9906, Grade 2B

Note : Performance curve are as per specific gravity and viscosity of water.

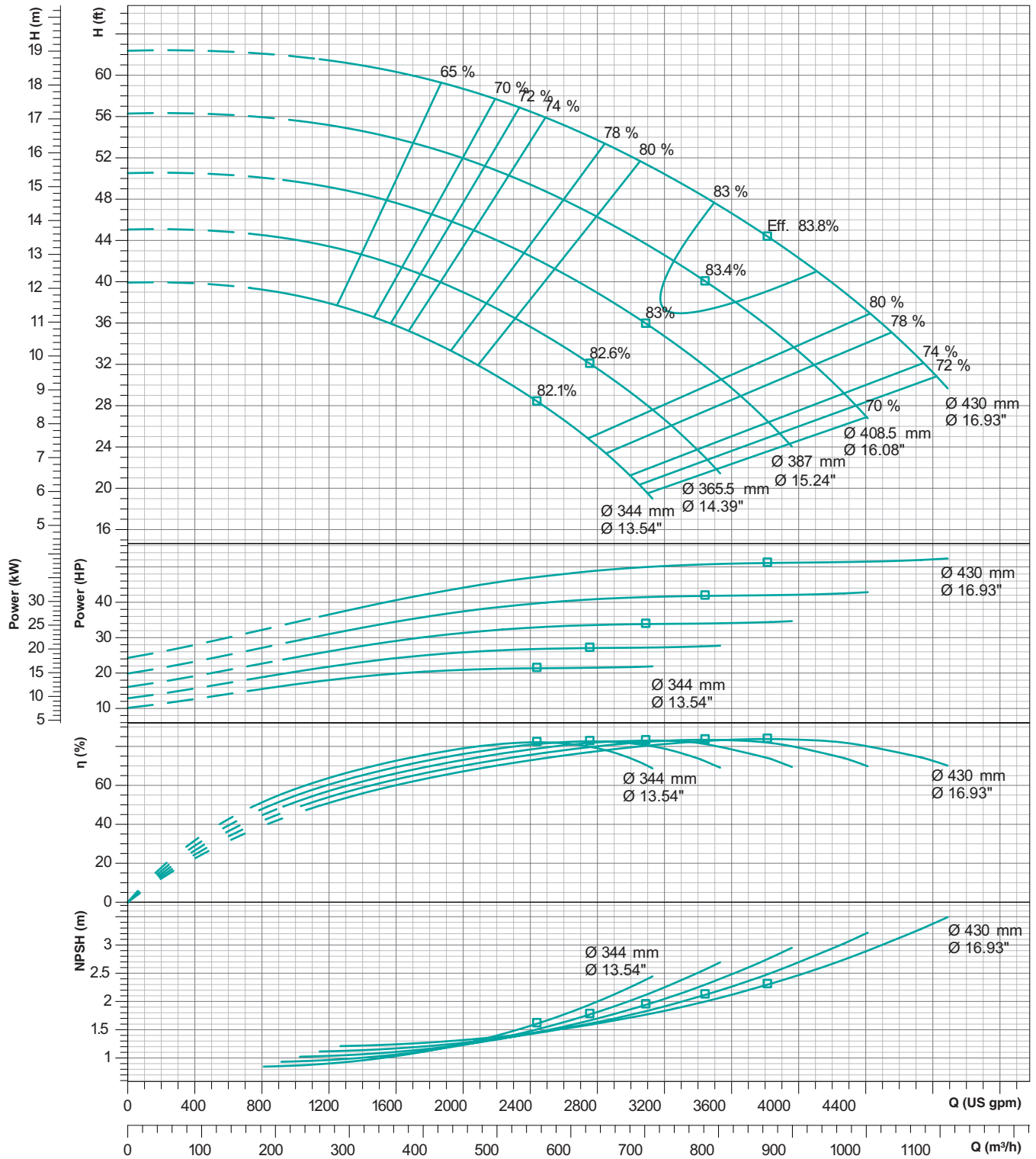
PERFORMANCE CURVES

Model : **TEP - 12 x 10 x 17**

Speed : **860 rpm**

Suc x Del (in Inches) : **12 x 10**

Max. Impeller Ø : **430mm**



Performance curve tolerances are as per HI : 14.6 / ISO: 9906, Grade 2B

Note : Performance curve are as per specific gravity and viscosity of water.

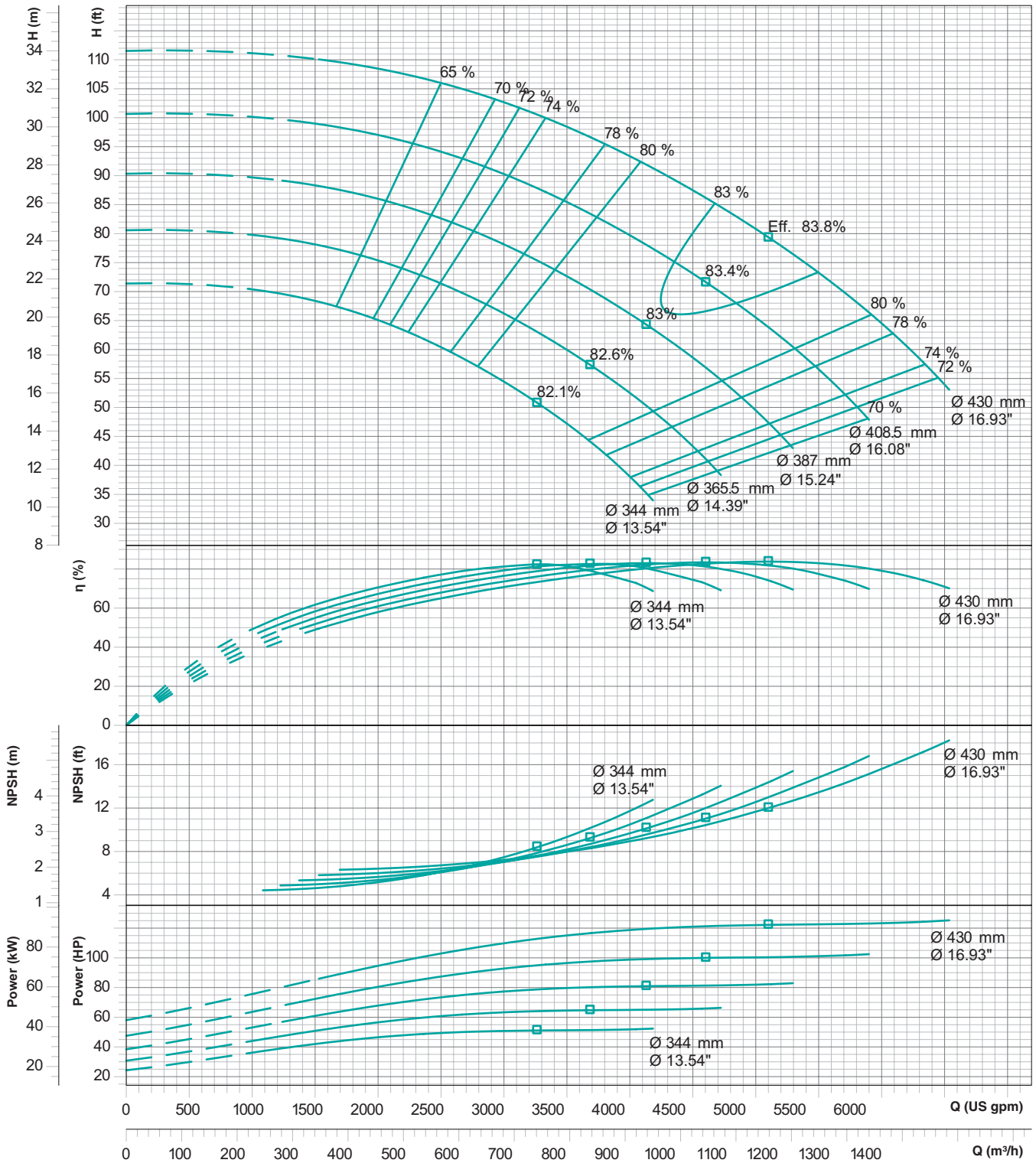
PERFORMANCE CURVES

Model : **TEP - 12 x 10 x 17**

Speed : **1150 rpm**

Suc x Del (in Inches) : **12 x 10**

Max. Impeller Ø : **430mm**



Performance curve tolerances are as per HI : 14.6 / ISO: 9906, Grade 2B

Note : Performance curve are as per specific gravity and viscosity of water.

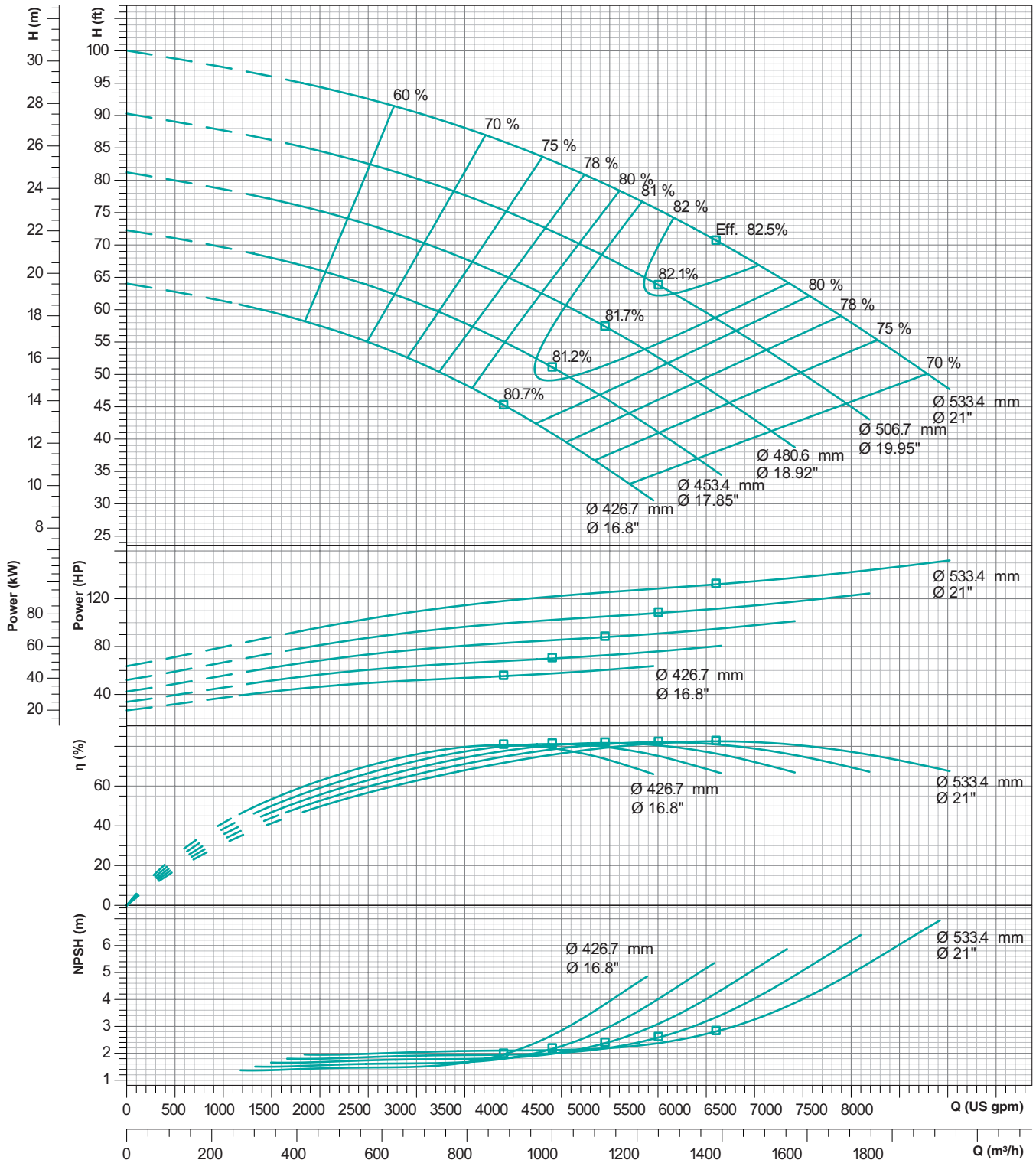
PERFORMANCE CURVES

Model : **TEP - 14 x 12 x 21**

Speed : **860 rpm**

Suc x Del (in Inches) : **14 x 12**

Max. Impeller Ø : **533.4mm**



Performance curve tolerances are as per HI : 14.6 / ISO: 9906, Grade 2B

Note : Performance curve are as per specific gravity and viscosity of water.

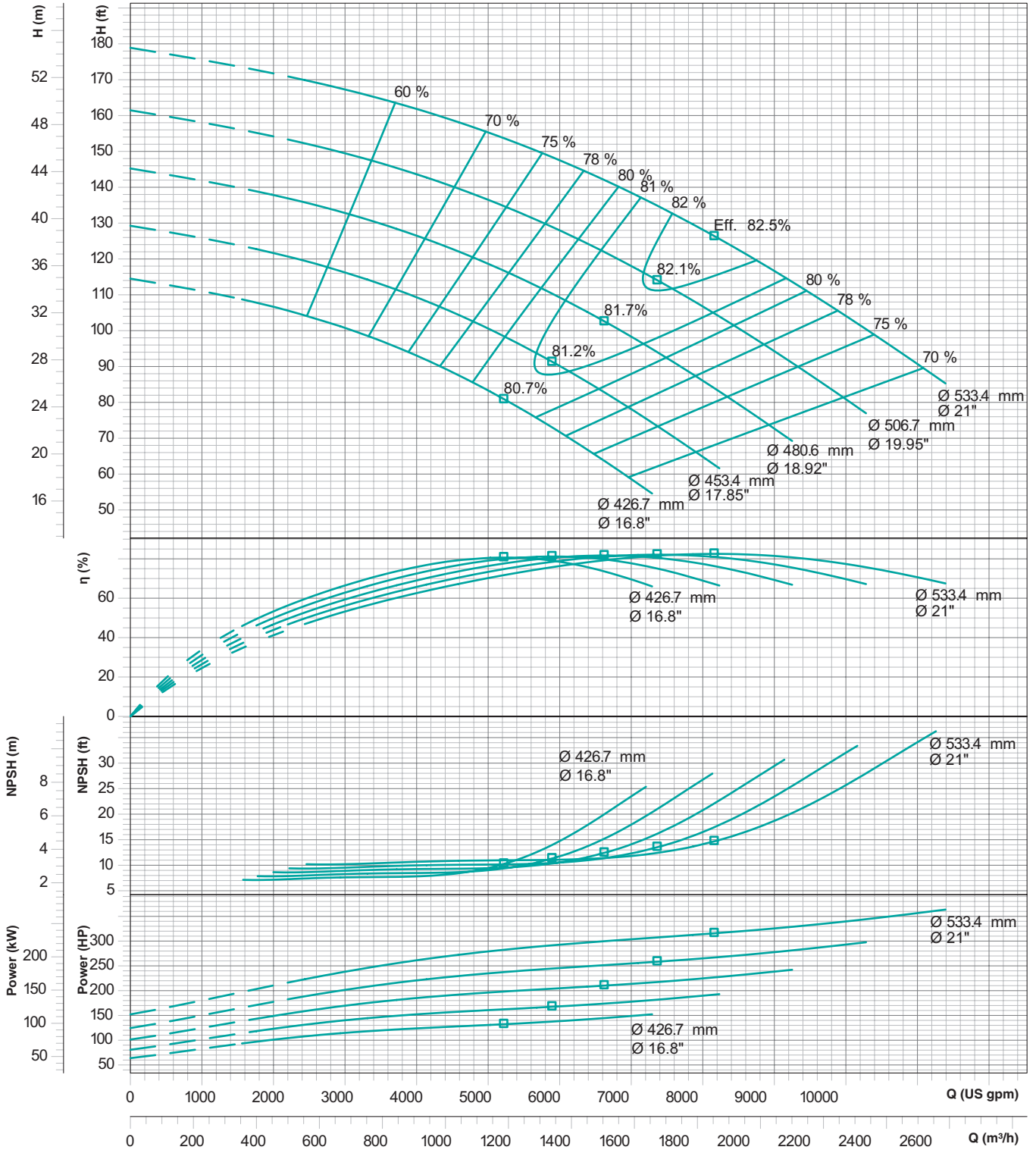
PERFORMANCE CURVES

Model : **TEP - 14 x 12 x 21**

Speed : **1150 rpm**

Suc x Del (in Inches) : **14 x 12**

Max. Impeller Ø : **533.4mm**



Performance curve tolerances are as per HI : 14.6 / ISO: 9906, Grade 2B

Note : Performance curve are as per specific gravity and viscosity of water.

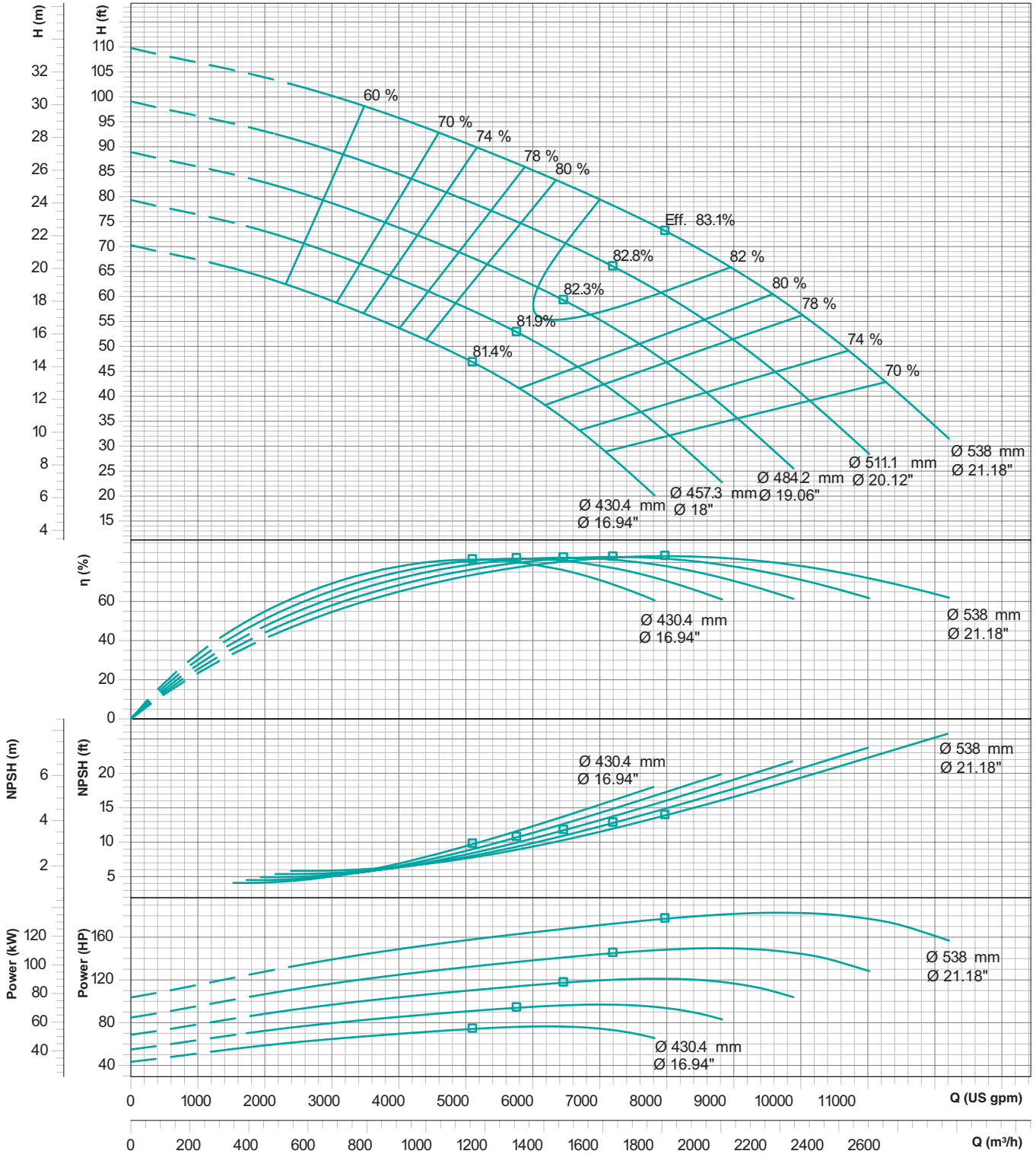
PERFORMANCE CURVES

Model : **TEP - 16 x 14 x 21**

Speed : **860 rpm**

Suc x Del (in Inches) : **16 x 14**

Max. Impeller Ø : **538mm**



Performance curve tolerances are as per HI : 14.6 / ISO: 9906, Grade 2B

Note : Performance curve are as per specific gravity and viscosity of water.

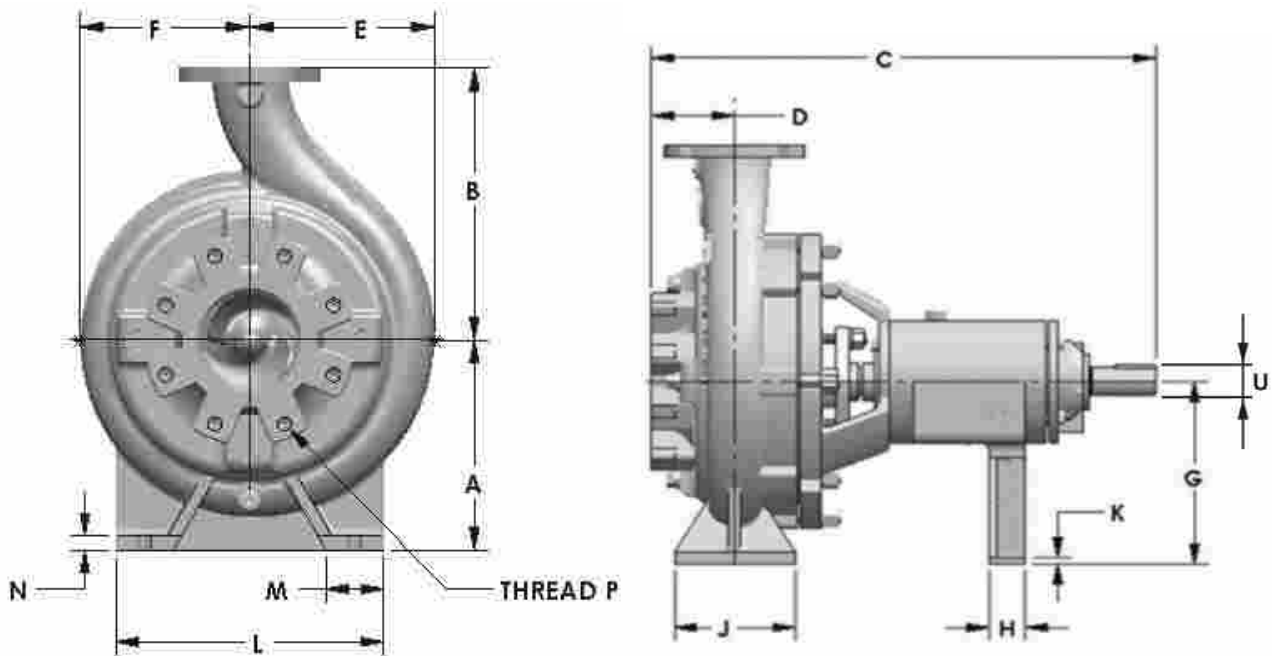
INTERCHANGEABILITY CHART

| Part Name | 6 x 3 x 14 (150 x 80 x 350) | 6 x 4 x 14 (150 x 100 x 350) | 8 x 4 x 17 (200 x 100 x 430) | 8 x 5 x 17 (200 x 125 x 430) | 8 x 6 x 21 (200 x 150 x 430) | 10 x 8 x 21 (250 x 200 x 430) | 12 x 10 x 17 (300 x 250 x 430) | 8 x 6 x 21 (200 x 150 x 530) | 10 x 8 x 21 (250 x 200 x 530) | 14 x 12 x 21 (355 x 300 x 530) | 16 x 14 x 21 (400 x 355 x 530) |
|-------------------|--------------------------------|---------------------------------|---------------------------------|---------------------------------|---------------------------------|----------------------------------|-----------------------------------|---------------------------------|----------------------------------|-----------------------------------|-----------------------------------|
| Casing | | | | | | | | | | | |
| Casing Side Flate | | | | | | | | | | | |
| Impeller | | | | | | | | | | | |
| Stuffing Box | | | | | | | | | | | |
| Frame Assembly | | | | | | | | | | | |

DETAILS OF STANDARD COMPONENTS

| SHAFT & BEARING DATA | Frame - I | Frame - II | Frame - III |
|--|-----------|------------|-------------|
| SHAFT DIAMETER (mm) | | | |
| At Coupling | Ø42 | Ø60 | Ø90 |
| At 'NDE' Bearing | 60 | 85 | 120 |
| At 'DE' Bearing | 50 | 75 | 110 |
| Between bearings | 63.5 | 92.1 | 122.2 |
| Under Sleeve | 45 | 69.82 | 114.27 |
| STUFFING BOX DIMENSIONS (mm) | | | |
| Shaft sleeve Outer Diameter | 55 | 80 | 135 |
| Stuffing Box Bore diameter | 80.5 | 105.5 | 173 |
| Stuffing Box Bore diameter | 88 | 93 | 134.5 |
| SHAFT LENGTH (mm) | | | |
| Impeller end of shaft to 'NDE' Bearing | 270.2 | 321.3 | 406.3 |
| Between bearings | 152.4 | 172.7 | 335.8 |
| 'DE' Bearing to Coupling end | 170.1 | 220.2 | 282.9 |
| BEARINGS | | | |
| 'NDE' | 21312 | 21317 | 22224 |
| 'DE' | 5310 | 5315 | 5222 |
| KEYWAY AT COUPLING (mm) | | | |
| Width | 12 | 18 | 25 |
| Depth | 5 | 7 | 9 |
| Length | 50 | 56 | 100 |
| Shaft Thread at Impeller | M36x3 RH | M56x3 RH | M90x6 RH |

BARE SHAFT PUMP - MOUNTING DIMENSION



| | Frame - I | | Frame - II | | | | | Frame - III | | | |
|---|--------------------------------|---------------------------------|---------------------------------|---------------------------------|---------------------------------|----------------------------------|-----------------------------------|---------------------------------|----------------------------------|-----------------------------------|-----------------------------------|
| | 150 x 80 x 350 (6 x 3 x 14) | 150 x 100 x 350 (6 x 4 x 14) | 200 x 100 x 430 (8 x 4 x 17) | 200 x 125 x 430 (8 x 5 x 17) | 200 x 150 x 430 (8 x 6 x 17) | 250 x 200 x 430 (10 x 8 x 17) | 300 x 250 x 430 (12 x 10 x 17) | 200 x 150 x 530 (8 x 6 x 21) | 250 x 200 x 530 (10 x 8 x 21) | 350 x 300 x 530 (14 x 12 x 21) | 400 x 350 x 530 (16 x 14 x 21) |
| A | 279 | 279 | 368 | 368 | 368 | 432 | 435 | 432 | 432 | 546 | 610 |
| B | 362 | 362 | 559 | 508 | 508 | 559 | 613 | 660 | 711 | 813 | 864 |
| C | 689.2 | 685.5 | 827.7 | 844.6 | 859.4 | 872.1 | 928.2 | 1169.5 | 1175.3 | 1222.7 | 1288.6 |
| D | 114.3 | 114.3 | 128.2 | 132.1 | 139.7 | 139.2 | 180.8 | 152.4 | 154.9 | 177.8 | 243.8 |
| E | 245.4 | 248.4 | 363.6 | 327.2 | 359.6 | 403.1 | 467.2 | 418.1 | 456.7 | 560.2 | 631.7 |
| F | 225 | 225 | 305 | 280.9 | 294.7 | 313.7 | 334.2 | 358.8 | 368.6 | 422.3 | 453.2 |
| G | 279 | 279 | 368 | 368 | 368 | 432 | 432 | 432 | 432 | 546 | 610 |
| H | 50 | 50 | 65 | 65 | 65 | 65 | 65 | 70 | 70 | 70 | 70 |
| J | 165 | 165 | 203 | 203 | 203 | 203 | 203 | 254 | 254 | 254 | 254 |
| K | 10 | 10 | 10 | 10 | 10 | 12 | 12 | 14 | 14 | 15 | 15 |
| L | 355.6 | 355.6 | 445 | 445 | 445 | 445 | 445 | 610 | 685.8 | 685.8 | 685.8 |
| M | 76.2 | 76.2 | 101.6 | 101.6 | 101.6 | 101.6 | 101.6 | 152.7 | 152.4 | 152.4 | 152.4 |
| N | 19 | 19 | 25 | 25 | 25 | 25 | 25 | 25 | 25 | 25 | 25 |
| P | M20x2.5 | M20x2.5 | M20x2.5 | M20x2.5 | M20x2.5 | M24x3 | M24x3 | M20x2.5 | M24x3 | M24x3 | M24x3 |
| U | 42 | 42 | 60 | 60 | 60 | 60 | 60 | 90 | 90 | 90 | 90 |



T H E P O W E R B E H I N D T H E F O R C E

Naargo Industries Private Limited, one of the leading manufacturers of latest state of art, large range of pumps and motors, is managed by veterans who are in the pump industry for almost half a century. The products are employed in various applications like irrigation, domestic, civil construction, de-watering etc; The Company has a strong distribution network in India for sales & service and a strong global presence.

Quality is the key factor in Naargo's products. The expansive infrastructure and environment accredited with ISO 9001 quality certification, latest engineering softwares, high-tech machinery, futuristic pumping technology and high caliber workforce facilitate the production of flawless and efficient products on par with international standards under the brand name of "Tormac". The well equipped R & D wing stays alive to the changing global trends and comes out with viable solutions for innovative product development and upgradation.

The Products currently available include Stainless Steel Submersible Pumps (SS 304, SS 316 & SS 904L), Submersible Motors (CI, SS 304, SS 316 & SS 904L - HT on optional), Starters & Control Panels, Centrifugal Monoblock Pumps, End Suction Pumps, Close Coupled Pumps, Horizontal Split Case Pumps, Horizontal & Vertical Multistage Pumps, Inline Booster Systems, Sewage, Drainage & Dewatering Pumps, Induction Motors, Submersible Cables, Riser Pipes and Column Pipes.

The power, performance and endurance of the products backed by the uncompromising teamwork and value systems will certainly propel the company's growth towards new horizons in the pump industry.

IC-TEP-B/26-E3

Naargo Industries Private Limited,

REG. OFFICE : No. 8/116, Ground Floor, Athipalayam Road, Chinnavedampatti,
Coimbatore North - 641049, Tamil Nadu, India. Tel : +91 978 6522622,
E-mail : tormac@tormacpumps.com, Web : www.tormacpumps.com

Tormac
P U M P S